

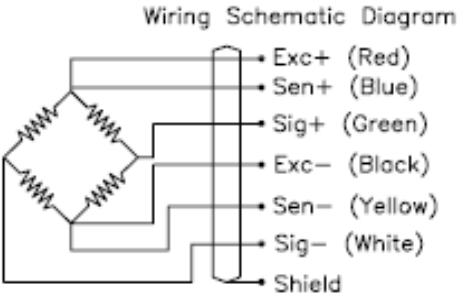
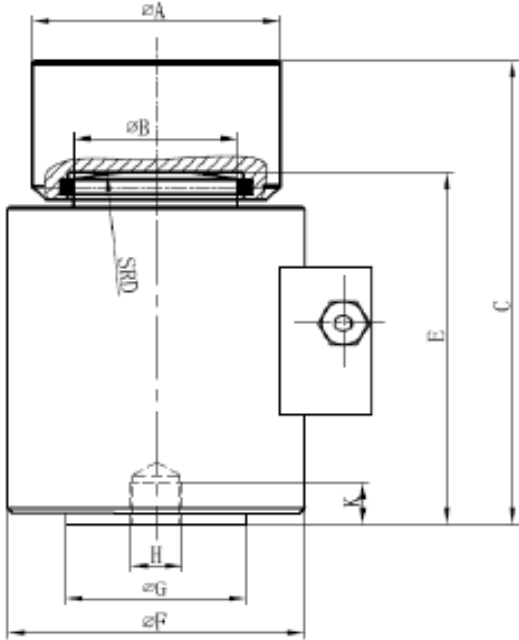
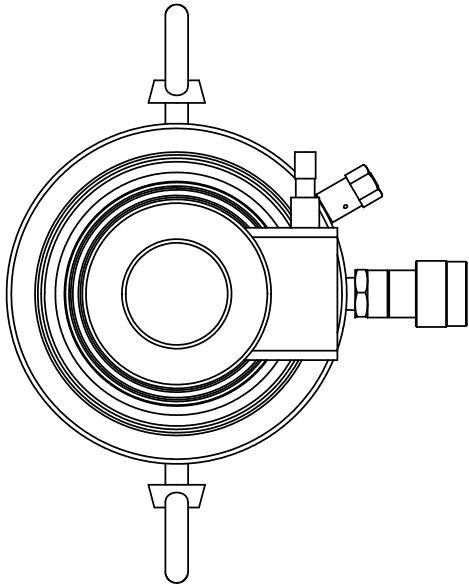
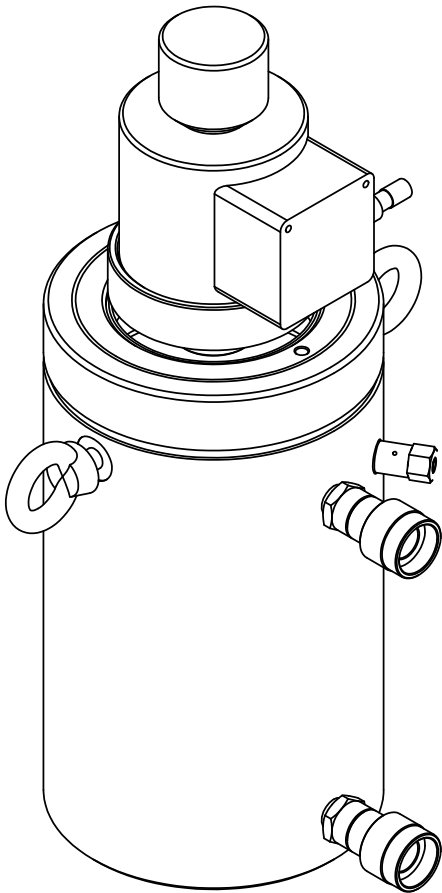
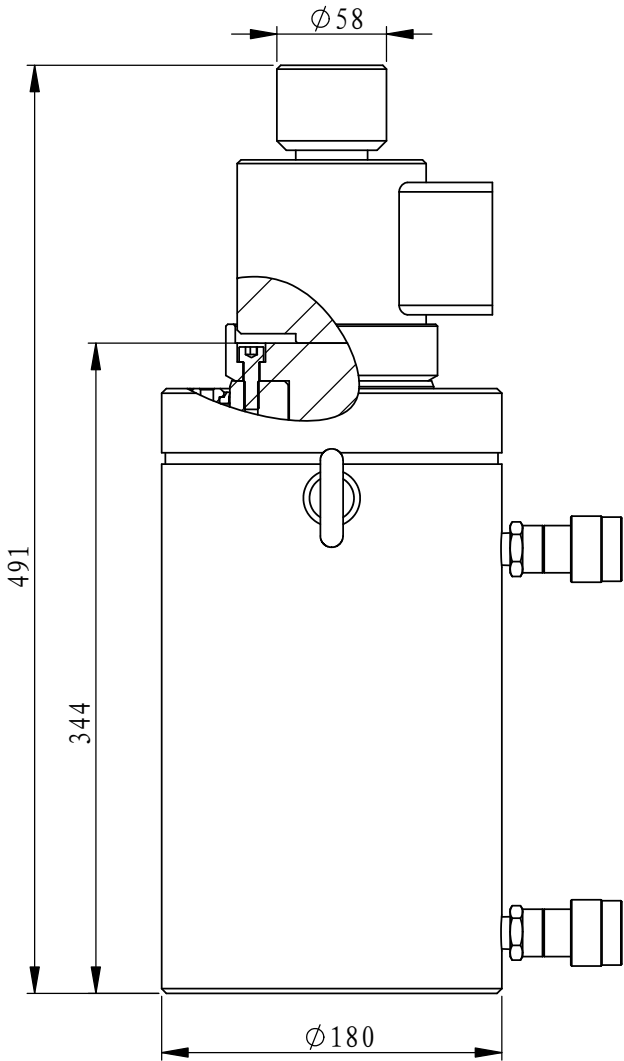


WEIGHING

Weighing Equipment Specifications

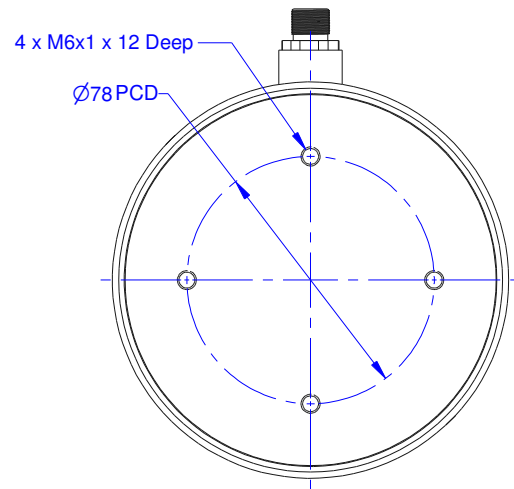
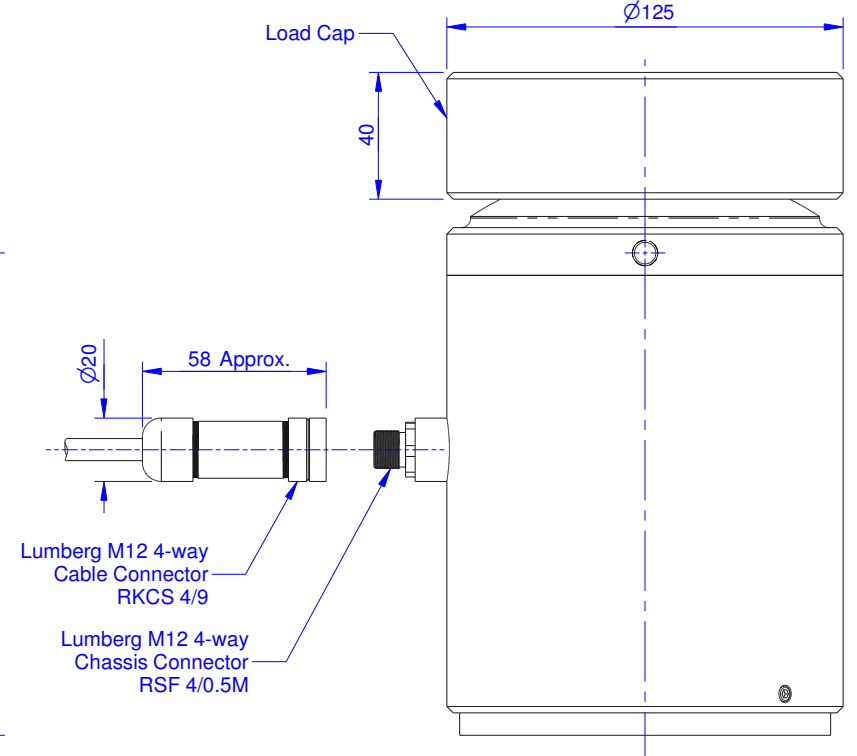
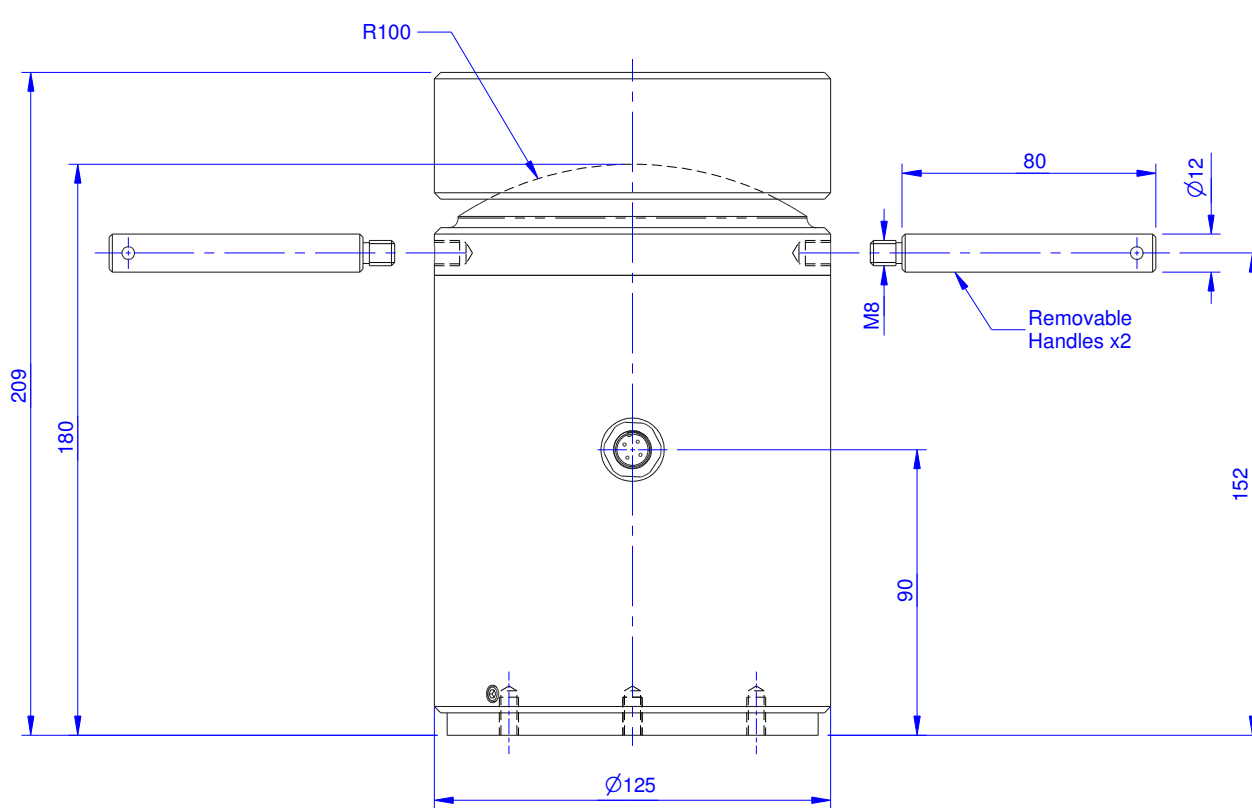


Weighing System
using strain gauge compression loadcells



Technical Parameter		
Rated Load	Ton	25
Sensitivity	mV/v	2.0±0.002
Total Error	%F.S	≤ ± 0.05
Creep(30min)	%F.S	± 0.03
Zero Balance	%F.S	± 1
TCO	%F.S/10℃	± 0.03
TC SPAN	%F.S/10℃	± 0.03
Input Resistance	Ω	400±10
Output Resistance	Ω	352±2
Insulation Resistance	MΩ	≥ 5000
Operating Temp Range	℃	-30~+70
Safe Load Limit	%F.S	150
Lateral Load Limit	%F.S	300
Recommend Excitation	V	10~12
Max Excitation	V	15
Pratection Class		IP68
Construction		Construction Stainless Steel
Wire		14m

UNLESS OTHERWISE SPECIFIED: DIMENSIONS ARE IN MILLIMETERS SURFACE FINISH: TOLERANCES: LINEAR:±0.3 ANGULAR:±1°				FINISH:		FINISH UNLESS SPECIFIED		DO NOT SCALE DRAWING		REVISION: ○	
DRAWN: ZHT				DATE: 2012-10-08		SIGNATURE:		SIGNATURE:		DESCRIPTION:	
CHK'D:										25TON WEIGHTOR	
APPV'D:											
MFG:											
Q.A:											
										DRAWING NO. A3	
PRINT DATE: 2012-10-8				WEIGHT: kg		比例: 1:10		SHEET 1 OF 1			



Specifications

Rated Load	200 Tonne
Proof Load	150% of Rated Load
Ultimate Breaking Load	>300% of Rated Load
Output	1.6mV/V at Rated Load (Nominal)
Non-Linearity	<±0.25% of Rated Load
Non-Repeatability	<±0.05% of Rated Load
Excitation Voltage	10 VDC Recommended (15 VDC Max)
Bridge Resistance	700 ohm
Insulation Resistance	>500 Mohm @ 500 VDC
Operating Temperature Range	-20°C to +70°C
Compensated Temperature Range	-10°C to +50°C
Zero Temperature Coefficient	<±0.01% of Rated Load / °C
Span Temperature Coefficient	<±0.01% of Rated Load / °C
Environmental Protection Level	IP67 with Connector Mated
Cable	4 Core PUR (5 Metres)

**DO NOT SCALE
IF IN DOUBT - ASK**

TOLERANCES UNLESS OTHERWISE STATED

GENERAL SURFACE: 3.2Ra

UP TO 10mm: ± 0.1

10mm TO 100mm: ± 0.25

OVER 100mm: ± 0.5

ANGULAR DIMS: ± 1°

REMOVE ALL BURRS AND SHARP EDGES

FABRICATION / CASTINGS

UP TO 600mm: ± 1.0

OVER 600mm: ± 2.0

TITLE: Compression Load Cell

MAT'L: 17-4PH H1150 + 1150

FINISH: N/A

ISSUE: **A**

DATE: 10/01/017

DRN: F.C.

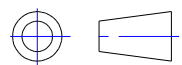
CHANGE: Initial Issue

LCM SYSTEMS
Solutions in Load Cell Technology

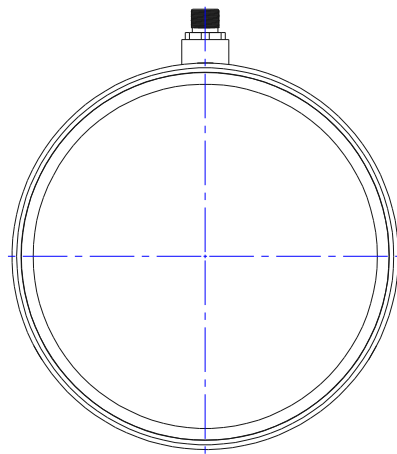
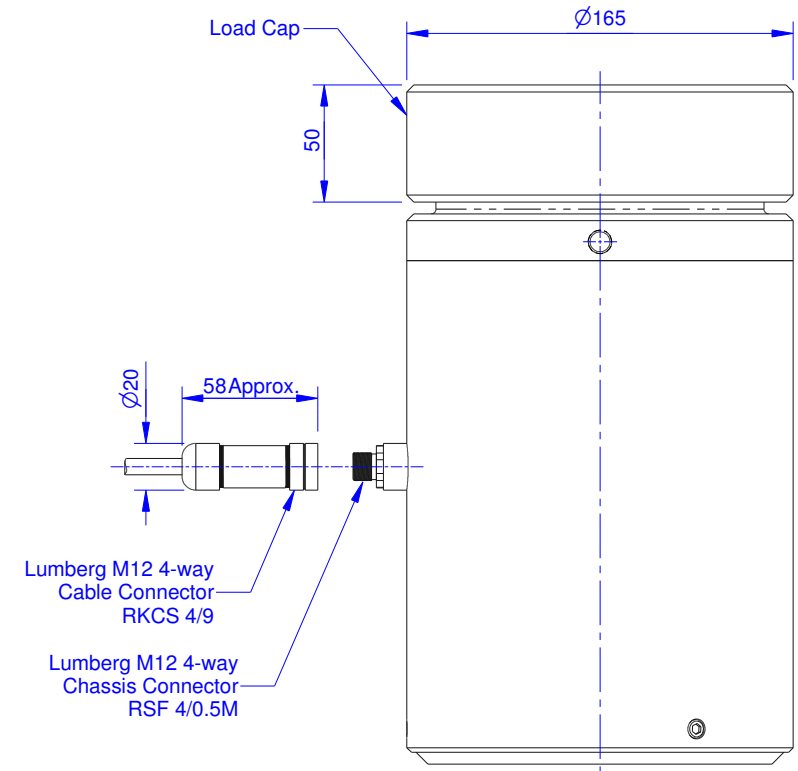
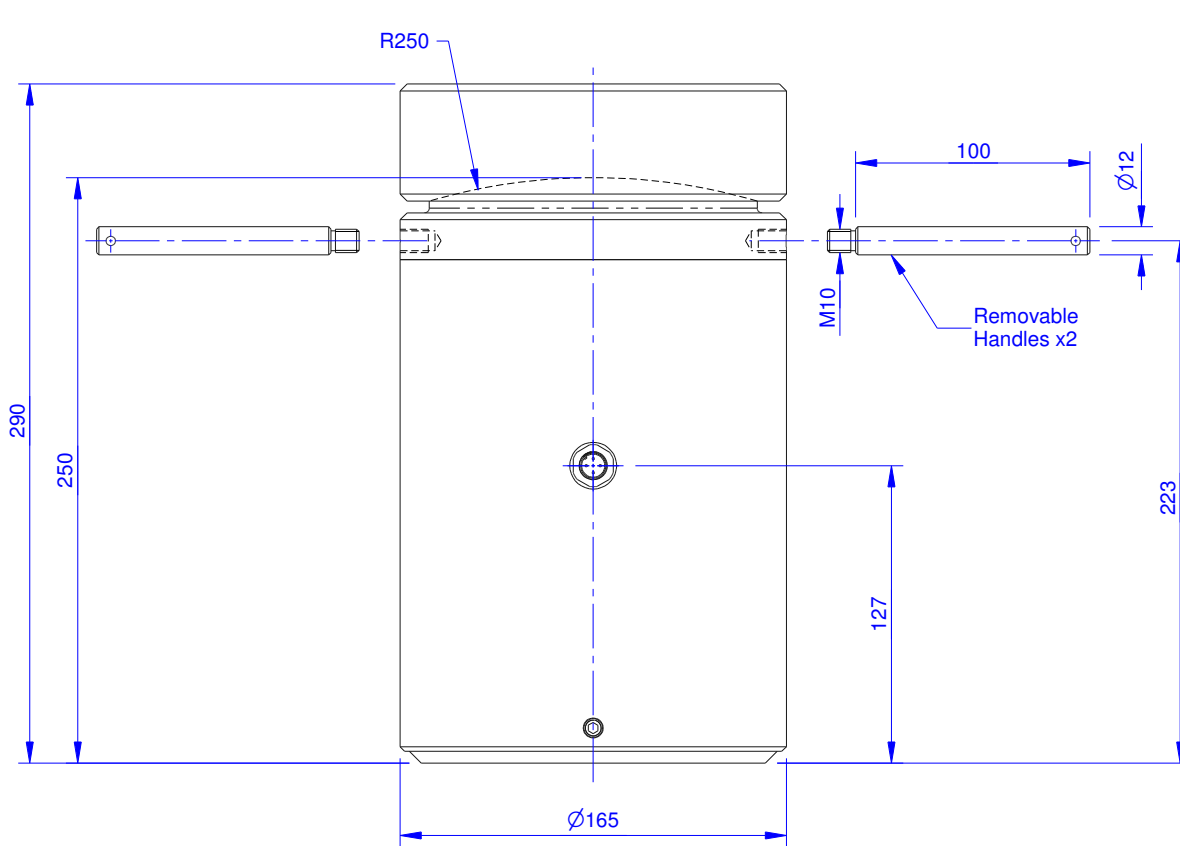
LCM Sytems Ltd. Unit 15 Newport Business Park, Newport,
Isle of Wight, PO30 5GY. Tel: 01983 249264, Fax: 01983 249266

DRG No: **LCM4795**

THE INFORMATION CONTAINED IN THIS DRAWING IS THE PROPERTY OF LCM SYSTEMS. IT MAY NOT BE REPRODUCED IN ANY FORM, NOR THE CONTENT DISCLOSED TO ANY THIRD PARTY WITHOUT THE WRITTEN CONSENT OF THE COMPANY.



**ALL DIMENSIONS
IN MILLIMETERS**



Specifications

Rated Load	400 Tonne
Proof Load	150% of Rated Load
Ultimate Breaking Load	>300% of Rated Load
Output	1.6mV/V at Rated Load (Nominal)
Non-Linearity	<±0.25% of Rated Load
Non-Repeatability	<±0.05% of Rated Load
Excitation Voltage	10 VDC Recommended (15 VDC Max)
Bridge Resistance	1400 ohm
Insulation Resistance	>500 Mohm @ 500 VDC
Operating Temperature Range	-20 °C to +70 °C
Compensated Temperature Range	-10 °C to +50 °C
Zero Temperature Coefficient	<±0.01% of Rated Load / °C
Span Temperature Coefficient	<±0.01% of Rated Load / °C
Environmental Protection Level	IP67 with Connector Mated
Cable	4 Core PUR (5 Metres)

**DO NOT SCALE
IF IN DOUBT - ASK**

TOLERANCES UNLESS OTHERWISE STATED

GENERAL SURFACE: 3.2Ra

UP TO 10mm: ± 0.1

10mm TO 100mm: ± 0.25

OVER 100mm: ± 0.5

ANGULAR DIMS: ± 1°

FABRICATION / CASTINGS

UP TO 600mm: ± 1.0

OVER 600mm: ± 2.0

REMOVE ALL BURRS AND SHARP EDGES

TITLE: Compression Load Cell

MAT'L: 17-4PH H1150 + 1150

FINISH: N/A

ISSUE: **A**

DATE: 11/01/17

DRN: F.C.

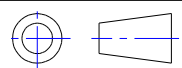
CHANGE: Initial Issue

THE INFORMATION CONTAINED IN THIS DRAWING IS THE PROPERTY OF LCM SYSTEMS. IT MAY NOT BE REPRODUCED IN ANY FORM, NOR THE CONTENT DISCLOSED TO ANY THIRD PARTY WITHOUT THE WRITTEN CONSENT OF THE COMPANY.

LCM SYSTEMS
Solutions in Load Cell Technology

LCM Sytems Ltd. Unit 15 Newport Business Park, Newport,
Isle of Wight, PO30 5GY. Tel: 01983 249264, Fax: 01983 249266

DRG No: **LCM4796**



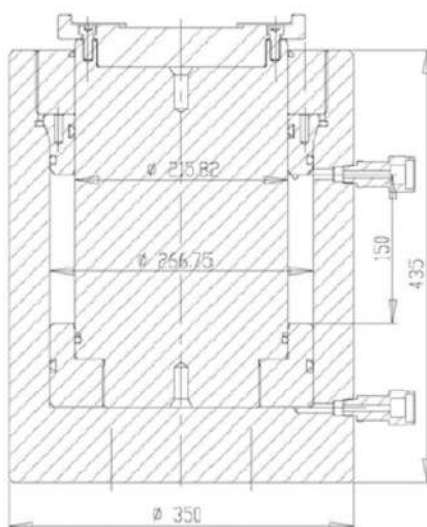
**ALL DIMENSIONS
IN MILLIMETERS**



WEIGHING

100t hydraulic Jack & Loadcell Dimensions

100MT Double Acting Hydraulic Cylinder (G100-150D)



Specification		
Capacity(Push/Pull)	kN	3910/1351
Work Pressure	MPa	70
Effect Area(Push/Pull)	cm ²	558.57/192.93
Oil Capacity(Push/Pull)	L	8.38/2.89
Max. Stroke	mm	150

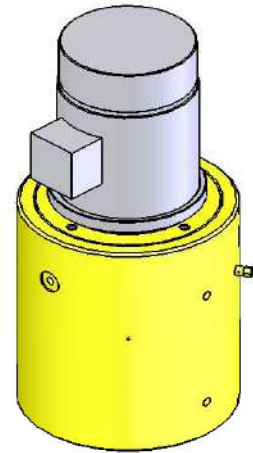
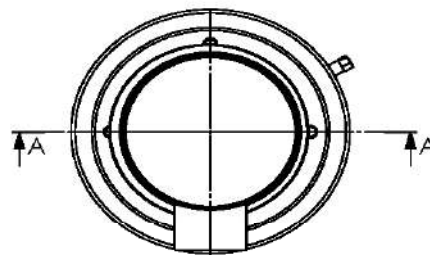
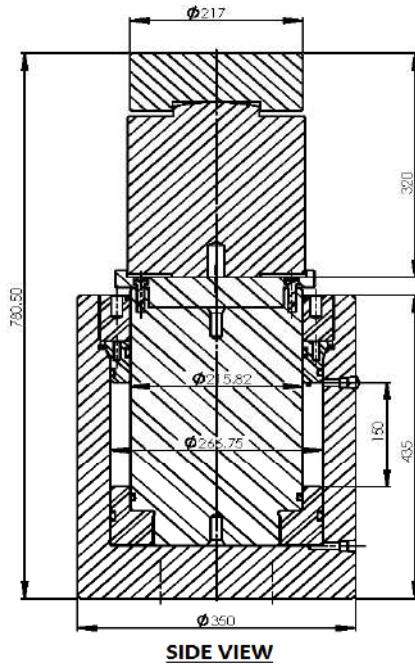
Weighing System

using strain gauge compression loadcells



WEIGHING

400t Hydraulic Jack and Loadcell Dimensions



400MT Loadcell (CL400)

Specification		
Rated Load	Ton	400
Total Error	%F.S	$\leq \pm 0.3$
Zero Balance	%F.S	± 1
Input Resistance	Ω	400 ± 10
Output Resistance	Ω	352 ± 2
Operating Temp Range	$^{\circ}\text{C}$	$-30 \sim +70$
Safe Load Limit	%F.S	150
Lateral Load Limit	%F.S	300
Protection Class	IP67	

400MT Double Acting Hydraulic Cylinder (G400-150D)

Specification		
Capacity(Push/Pull)	kN	3910/1351
Work Pressure	MPa	70
Effect Area(Push/Pull)	cm^2	558.57/192.93
Oil Capacity(Push/Pull)	L	8.38/2.89
Max. Stroke	mm	150

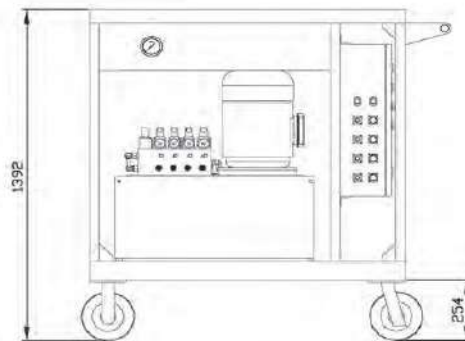
Weighing System

using strain gauge compression loadcells

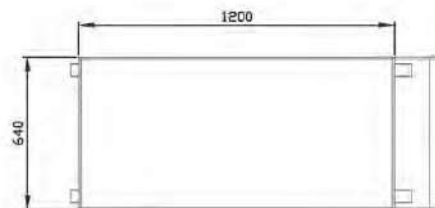


WEIGHING

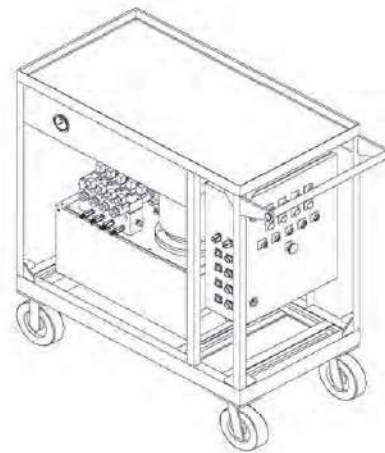
PLC Control Split Pump



SIDE VIEW



TOP VIEW



ISOMETRIC VIEW

PLC Control 4 Points Split Pump (SEPC4460W-4P)

Specification		
Rated Flow	L/min	5.7
Work Pressure	MPa	70
Useable Oil	L	60
Power Source	V	3~380
Motor Size	kW	7.5

Weighing System

using strain gauge compression loadcells