



152935-U  
**AIR-MARINE**  
 CARGO AGENCY SDN BHD

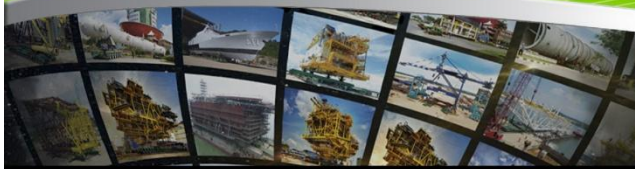
Making Impossible **POSSIBLE**

**OUR EXPERTISE**

SPECIALIZED ENGINEERED MOVER SERVICES . HEAVY HAULAGE . ODDSIZED CARGO HANDLER . OVERLAND CONVENTIONAL TRUCKING SERVICES  
 INTERMODAL CONTAINER HAULAGE . MOBILE & CRAWLER CRANE - RENTAL . HEAVYLIFTING & ERECTING  
 FREIGHT FORWARDING & CUSTOMS BROKERAGE SERVICES . AIR CARGO . PROJECT ENGINEERING . PROJECT CARGO - SHIPPING & MANAGEMENT  
 WAREHOUSE RENTAL & INVENTORY MANAGEMENT . WEIGHING, JACKING & SKIDDING . PORTA CABIN - SALES & RENTAL

[www.air-marine.com](http://www.air-marine.com)

Tel: +6 086 338855 Fax: +6 086 333800 Email: [info@air-marine.com](mailto:info@air-marine.com)





## Corporate Information

ESTABLISHED	❖ 06-05-1982
INCORPORATED	❖ 30-04-1986
COMPANY REGISTRATION NO.	❖ 152935-U
COMPANY STATUS	❖ PRIVATE LIMITED
REGISTERED ADDRESS	❖ NO. 57, MEDAN JAYA COMMERCIAL CENTRE JALAN TUN HUSSEIN ONN 97000 BINTULU, SARAWAK, EAST MALAYSIA
CORRESPONDENCE ADDRESS	❖ NO. 57, MEDAN JAYA COMMERCIAL CENTRE JALAN TUN HUSSEIN ONN 97000 BINTULU, SARAWAK, EAST MALAYSIA
TELEPHONE	❖ 6086-33 88 55 (12 lines)
FAX	❖ 6086-333 800 / 310 800
E-MAIL	❖ <a href="mailto:info@air-marine.com">info@air-marine.com</a>
TELEX	❖ MA73209
CABLE	❖ AMCA
AUTHORISED CAPITAL	❖ RM1,000,000.00
PAID-UP CAPITAL	❖ RM1,000,000.00
EQUITY PARTICIPATION	❖ 100% MALAYSIAN CITIZENS (100% MALAYSIAN – NON BUMIPUTRA)
BOARD OF DIRECTORS	❖ MANAGING DIRECTOR - WILLIAM CHIEW SOON MING OPERATIONS DIRECTOR - STEWART CHIEW SOON HUI
BANKER'S NAME ADDRESS	❖ MAYBANK LOT 11-12, MEDAN SENTRAL COMMERCIAL CENTRE JALAN KIDURONG, 97000 BINTULU, SARAWAK [A/C No. 5111-7710-0779] SWIFT CODE: MBBEMYKXXX  HONG LEONG BANK BERHAD LOT 3073 - 3074 JALAN ABANG GALAU 97000 BINTULU, SARAWAK [A/C No. 0180-0016-963]
COMPANY AUDITOR	❖ PHILIP TONG & CO. BINTULU, SARAWAK TEL.: 086-334 871 FAX: 086-330 168
NO OF EMPLOYEES	❖ 338



## Health, Safety & Environment Policy



# HEALTH, SAFETY & ENVIRONMENT POLICY

**AIR-MARINE GROUP's** basic policy is "Zero Lost Time Injury".

It is the company's foundation to expect every effort, ensuring a high degree of Safety, Health and Environmental condition for the employees and render protection to the Company's assets avoiding any possible damage.

To facilitate this Policy, the Managing Director has responsibility for leadership in the Management of all aspects of the Department operations, including Occupational Safety carried out and ensure that Policies and Procedures are strictly followed.

Employees should be aware of their responsibilities towards safety instruction with regards to the policies and procedures.

AIR-MARINE Group's objectives are :-

- To comply with Malaysian legal and other statutory requirement;
- To prevent occupational injury, illness and property damage;
- To ensure continual improvement on Safety, Health & Environment Management System;
- To continue developing the employee's awareness, knowledge and skills in the field of Safety, Health and Environment.

Employees shall performed their roles and responsibility to prevent occupational illness, accident, injury and pollution to the environment. Employees shall report all hazards, unsafe conditions and unsafe act which may lead to accident or occupational illness.

.....  
  
**William Chew Soon Ming**

Managing Director

10th November 2018



## About Us

### into the future with confidence



We always look ahead and wonder what the world would be like in the future! Recognizing reality from fantasy, we challenge all possibilities by scaling the peaks. Our leaders always aim high and high are never high enough for us!

AIR-MARINE has always rationalized operations by charting a clear path for future growth to underpin its commercial ventures. It is poised to become a regional market leader in logistics services. Moving with the tide, we scan the horizon of time and visualize what is possible and oriented towards the future with steadfast confidence.

Creating Excellence is our noble goal. We pursue a prominent position surpassing the average by becoming superior in providing high quality services.

In our fellowship of endeavors, we are committed to mutual goals. Our contribution is for the common enterprise in which our value, quality, effort and commitments concurred with our capability will help us help you manage your requirements and listen to your needs.

Your faith and support is an investment which will grow with us and hence enabling us to serve you better.

### one call φ one stop φ one source

AIR-MARINE offers a comprehensive logistics solution to customers nationwide. With 4 offices in major towns of Sarawak and Agency appointment networks throughout Malaysia, we pride ourselves with a

variety of supplementary services such as Custom Brokerage, Equipment Rental, Trucking, Container Haulage, Warehousing and Distributions. Marine Agency, Packing and Removal, Project Cargo Movement and Management, Stevedoring and Rigging, etc which are conveniently offered to customers so that your shipments are as worry-free as possible.



Underpinning Customs Brokerage is our wealth of experience and expertise from a pool of talented staff members all conversant in Malaysian Customs Regulations and Rules. They can be consulted with all commercial aspects of trade and inventory control.

Our fast efficient Trucking services for conventional and containerized cargoes over both regular and irregular routes fulfill contracts under specific Agreements as well as for local short or long haul movement.



As a Project Specialist, we coordinate transport movement for sea, land and air through our international vendor to project site. We also provide project engineering and management services and ensure safe delivery of cargo. Our project cargo movement services include the haulage of heavy and over dimensional cargoes, conventional and containerized cargoes, bulk and break bulk. Other specialized areas

include filing of customs petition and protest, door-to-door services, marine insurance and the handling of import and export materials.

We streamline our overall logistics process by working closely with customers to enhance our services and to accommodate your changing needs at a moment notice. For every customer big or small across all industries, AIR-MARINE has the expertise and approach to deliver results.

And perhaps, this is the best choice you can make!





## setting our standard high

A new elite growing in importance and prestige has come of age. Malaysia, our Nation will reach spectacular growth faster than any other region in the World. AIR-MARINE has grown with the Nation. Its role in Freight Forwarding transcending pure economic reason has performed its predominant role as your partner-in-progress.

For over 20 years, the name AIR-MARINE has been synonymous with the development of logistics services. The roots of AIR-MARINE run deep and can be traced back to a time in 1980 when it started only as a small business enterprise in Bintulu. Building on the skills of its founder, Mr. William Chiew, the Company has grown steadily in reputation as well as stature to meet the ever-changing needs.

Progress has never come by accident but by design. It is the product of thoughtful planning, controlled execution, taking calculated risk and opportunity seizing. These activities are being practiced rigorously by AIR-MARINE. It is found in the element of discipline. That discipline is GOOD MANAGEMENT.

Our key is reliability. We expanded our fleet to provide additional capacity. We concentrate our investment not only in acquiring new state-of-the-art equipment but have also developed expertise and the knowledge to achieve the right solutions to your problems or requirements. We do this with a combination of infrastructure and skills to execute complete reliable logistics services.

Most important of all, we are unique in offering services across the entire logistics spectrum for all types of cargo and in every sectors of the Industry.

With speed and economy as our objectives, we offer you our expertise. As your integral partner, we cater to your requirement – whatever the size or weight of your cargo we are here to answer to any of your logistics needs. Our project team removed all complexities by planning for your every step of the way. This is our hallmark and our client will stand to gain from this expertise.

As one of the best in this region, we continue to provide you with the quality of service that you deserve an offer which encompasses unparalleled breath of service and expertise.

An AIR-MARINE Commitment, we are always determined to be the best only for you!





## our keys for success

Strong business fundamental concurrent with assets investment, expertise and healthy customer relationships are what make AIR-MARINE'S future more than promising in the burgeoning economics of Malaysia.

## client charter

We aspire to provide service excellence from the beginning until the end of our effort. A customer is the most important person in our organization. We exist to serve customers and that is why we are dependent on him. Believe us, we are not doing him a favor by giving us an opportunity to do so. We at AIR-MARINE wish to be known for our efficiency. We take our customer interest at heart to satisfy our preoccupation. They are the one who deserved the most courteous treatment we can give and all these can only be done through our combined strength of teamwork. We entered into the spirit of a long-term partnership with each other and are predicated on making the customer's interest our interest.

## strength in people

Our employees are the source of ideas, actions and performance. We encourage initiative and productivity by demonstrating trust in employees and resolving conflicts on the basic of principles not positions. This relationship is guided by our belief that individual dignity is primary.

Our approach is informal and non-bureaucratic. Our people are accessible at all times. Our organization is approachable but still dedicated to getting the job done. We foster this commitment as an induced environment that breeds fairness, self-fulfillment, and dedication to excellence, teamwork and a caring culture.

## our challenges in the future

We challenge to broaden our existing base by seeking new opportunity and the never-ending quest for quality performance. Our corporate culture does not allow for complacency but will be on the move always for continual growth and progress. Our strategy is to focus attention on our strongest business areas and chart a clear path every step of the way.

## our attention to safety

Our attention to safety is based on our full time commitment to injury free work force, consideration for the well being of others and individual self-worth. We believe in zero time injury as a part of quality itself. Our impact on operations including hazards and means employed to safe guard against them is always made known.



## our philosophy

When we work, we demonstrate a level of commitment towards a Clear Objective, explicit system and unambiguous contracts. Our mission is to contribute to the nation development and progress. With concerted effort drawn from our credible leadership, we shall break all boundaries and develop to greater height in the new millennium. We shall take a proactive stance and successfully improving our corporate image by refining methods.

The trusts of the community have helped us meet the demands of development. This has become possible with our commitment to higher standard of operations system, human resources technology and management.

In our pursuit of future interest we move forward with time for new things and for new business. We take the initiative to shape our future and create new rules of the game in business. We envisioned unlimited opportunities for growth and expansion.



We create an environment of entrepreneurships about the whole place. We share our goal with our people in order to foster and culture of cooperation. Our main drivers come from shared self-interest and do not necessary come from our diction.

## project engineering and management services



The integration of transport and crange services has enabled us to offer our clients with expert solution in project engineering and management services. This area of development is dependent on careful planning, consultation and excellent coordination.

AIR-MARINE has solid track record and experience in handling virtually every type of cargo. This includes steel structures, jackets, pressure vessels, boilers, turbines, transformer and etc. for the Oil and Gas, Power and other

industrial plants. Some of these are over dimensional cargoes which are extra high, extra lengthy and extra width of mammoth size. But AIR-MARINE can handle all of them.

AIR-MARINE relieved your burden on the complexity of project management. Our modus operandi is a single point responsibility cost estimating and control are the corner stone of our management decision. Therefore we take care of planning up till procurement strategy.

Scrutinizing work scope, time lines for infinite precision project scheduling, consultancy logistics support and erection of these cargoes all with cost effectiveness.

Our integrated logistics services package consisted of:-

- (a) Feasibility Study – Method statement and route evaluation.
- (b) Project Planning Appraisal – Technical drawing design, simulation and stability calculation.
- (c) Procurement and Supply – Define equipment requirement.
- (d) Logistics Supervision and Coordination – Availability of Project Team.
- (e) Erection – Rigging and installation.

## heavy contracting division

(Making the Impossible Possible)

The new Heavy Contracting Division of AIR-MARINE is a team of experienced heavy lift enthusiasts offering Malaysia and the rest of Asia a complete package of specialized heavy lift and oversized transportation & lifting services. From straight forward low loader transportation to moving ultra heavy items, crane supply or total project solutions. There is nothing



too large, too difficult or impossible for us. Always on the lookout for new challenges and opportunities: We are dedicated to consistently meet our clients' needs and expectations.

### A) HEAVY & OVERSIZED CARGO TRANSPORTATION

Whether you talk about a 20 tonnes weighing air fin cooler or a 1150 tonnes weighing 85m long distillation tower for the petrochemical industry, using our young fleet of gooseneck lowbeds and Goldhofer & Scheuerle self propelled and conventional hydraulic platform trailers, we will make every transportation project big or small a successful operation. But above all, the safety of your cargo and all people involved will always be our prime objective.

### B) WHEELED LOAD-OUT SERVICES

Have you ever moved more than a thousand tonnes from land on a floating barge? Assisted by our Self Propelled Goldhofer hydraulic platform trailers equipped with the latest computer systems it will all look like a straightforward operation. We currently have the capability to loadout a 2500 tonnes weighing cargo, but we are always on the lookout upholding bigger challenge. The in-house engineering department will take care of the preparation of the load-out manuals, determine the barge ballasting procedure and make all other necessary calculations and schedules.

### C) HEAVY LIFT BARGING



Either in combination with our transport operations, in combination with a crane or just the barging by itself. AIR-MARINE can be of service to you. Our own 230'x 60'x 14' size barge has a deck strength of 7 t/m<sup>2</sup> and is therefore very suitable for heavy lift operations. In combination with our heavy-duty ramps and ro-ro

service we can safely transport your heavy goods from one destination to the next.

### D) WEIGHING SERVICES

Need to weigh your offshore module or anything else that's big and heavy? Currently we have in-house a capacity of over 3000 tonnes hydraulic weighing jacks. The specially developed AIR-MARINE weighing system comprises of high quality Hi-Force hydraulic jacks and an accurate electronic pressure reading. When can we weigh your module?

### E) JACKING AND SKIDDING SERVICES

Many customers have prior experience with the jacking and skidding service before and many will surely agree with the benefits. It has been proven beyond doubt that our method of placing heavy and ultra heavy goods on foundation by means of jacking and skidding is very economical and very effective. Our existing system easily handles goods up to 1000 tonnes and if you need more capacity we will also make that come true. The method of jacking and skidding is especially suitable for heavy machinery such as generators, turbines, transformers and horizontal storage vessels.

Is it still too early to move or lift? Quite likely we can be of service providing a feasibility study, a route survey or give suggestions on a lifting solution. Our engineers are always ready to make time for you when you need assistance from the experts.

At a later stage, at the time of job execution the engineering department is the backbone of our first class service, because we know in our line of work good planning and preparation is the key to success. And so we made the rule that our engineers will simulate every critical job in 3D AutoCAD.

### F) HEAVY LIFT CRANAGE

With over 100 cranes in our fleet AIR-MARINE is the largest Malaysian owned crane company and has been providing crane supply services to the region for more than 15 years. All cranes with maximum capacities over 150 tonnes are now handled by the Heavy Contracting Division. This includes the companies' flagship a Demag CC2000, 400 tonnes crawler crane with superlift attachment.

Whether you just would like to rent the crane or subcontract a combined lifting & transportation package on a lump sum basis. We will be ready to face any such challenges and provide you with 1<sup>st</sup> class service.



## warehouse

Completed with 95,000 sq. feet of covered space, our warehouse caters exclusively for shell MDS storage of solid wax projects packed in bags or cartoons. This is an establishment of a unique blend of services with up to date warehouse management system (WMS) constituting the existing Microsoft Window computer system to meet an adequate functionality for the purpose of stock inventory control, operational performance, projection feedback control to manufacturing store and order fulfillment indicating order status at any point in time.



Our quality system meets the ISO 9001:2000 Quality Management System standard accreditation awarded by SIRIM and in compliance with USFDA requirement. This quality management system includes computer on-line which tract goods by items and sub items. Goods are picked up, stored and distributed with our on-time delivery system. We respond to customers' needs through the use of modern computer technology specializing in procurement to product

delivery. Our system also controls record, order booking and shipping with a single push of the button.

Analyzing market demand coupled with business foresight, more warehouses will be built by us to cater for modern industry demand. The concept of just-in-time delivery enables a customer to make optimum use of its own limited storage space especially in a manufacturing concern. The advantages of providing value added service from using our warehouses are:-

- Tallying and surveying
- Break Bulk / Consolidation of cargo
- Order picking and packing
- Racking storage to provide maximum space
- Distribution services such as labeling, palletizing and stretch wrapping
- Packing and re-bagging
- Warehouse Inventory Management
- Transshipment centre before cargo are delivered to the Port and vice versa
- Close proximity to Bintulu Port. Situated in the heart of Kidurong Industrial Park, Tg. Kidurong, our warehouses are only 2 Km from the Port and we are currently adding new facilities year by year to serve customer better.
- Ample open area within the warehouse premises for empty container storage as well as for parking of vehicles.
- Modern design with built-in dock levellers at the loading/unloading area for stuffing/unstuffing of cargoes to/from containers without much hassle.

In line with our expansion to meet market demand, we have also built another warehouse that can accommodate up to 150,000 sq. feet of storage space. It comprises of a double storey office, a level and raised floor warehouse with loading and unloading docks as well.



## fertilizer warehouse

Our company also caters for the storage of bulk fertilizer and Agric-Chemical products. Built on 90,000 sq. feet of covered area, this warehouse is capable of storing 40,000 tons of fertilizer at any one time. We also provide other auxiliary services such as bulk discharging, transportation, heaping, packing of bulk fertilizer into bags and delivery to customers' door.

Another fertilizer warehouse project is also coming onstream. We are building another 100,000 sq. feet of covered area with reserve land area for future expansion programme as the need arises.



## customs brokerage

Our customer brokerage teams are well versed with all the procedures and documentation and tariff codes related to customs clearance. Drawing on their knowledge and experience, we offer customs regulations and procedures such as duty exemption, application for import permit and drawbacks.

## international and domestic freight forwarding

In an increasing competitive market our customers requires experienced and professional Freight Forwarder who is familiar with the shipping requirements in Malaysia and at overseas destination. Our Freight Forwarding Team has years of experience in the business and have networking across the whole Globe.

## marine agency services



AIR-MARINE provides ship agency service by acting as ship's agent. It also caters for other marine operations services such as handling tugs, barges and liner vessels which can be tailored to suit the exacting needs of individual customer. Other network support for domestic and international liners are also provided through our experience agents located at various strategic destinations throughout the world. With our personalized service and global network of associates, we assure safe and timely delivery of your cargo to your satisfaction.

Our company also offers fuel bunkering and bonded stores.

Through our associated company, Bintulu Freight Forwarding Sdn. Bhd., we are also providing cargo handling services to Bintulu Port Sdn. Bhd. for the supply of Gang Labor, equipment operators and other related stevedoring services. Our company also offers fuel bunkering, stores, fresh water, barging and launches, marine surveyors, general transportation and vessel chartering.

## container freight station



AIR-MARINE provides off-dock Container Depot and Container Freight Station at Bintulu, Sibul and Miri. This is to capture niche market and is the one of the first of its kind in Sarawak.

Drawing from years of experience, our team of expertise design supervises and executed operations in the most efficient manner. Our main objective is to draw International Container Lessor to lease out these empty boxes at our Depot, to reposition empty inventories for use by local or

regional Freight Forwarders, and Shipping Agents for on-hiring and subsequent use of Shippers in Sarawak.

Our container Depot will draw container box owner to deposit their empty at our Depot and thus creating it as an empty transshipment hub for the deployment of these boxes. To complement the scope of off-dock activity, we provide container haulage, consolidation and stuffing, lift on/lift off (LOLO) services, logistics planning and operational methods acceptable to the industry for the smooth running of the Depot.

Other services also include container maintenance and repair which conform strictly to IICL (International Institute of Container Lessors Standards). Services include pre-trip inspection checking, pre cooling, and supply of spare parts, repair and Refurbishment. We believe this support facility will draw ship owners to reposition their empty boxes.

Our Mission is to market this service worldwide. Our experience in running these off-dock facilities will be an asset for the success of our entire business operations. This is our opportunity to prove our worth where professionalism will be fully emphasized.

## other services and facilities

Our strength lies not only in those sectors of business activities already mentioned but also from a diversified range of other services as well. This includes the followings:-

### 1. LOGISTIC AND CONSTRUCTION EQUIPMENT RENTAL

As a leading operator of logistics and construction equipment in Sarawak, our company supplies a variety of equipment such as Prime Mover, trailer, multi-axle modular trailer, forklift, crane, crane mounted lorry, cargo lorry, manlift boom lift, scissor lift and trucks for use on rental basis whenever required at a competitive price.

### 2. PORTA CABIN SUPPLY AND RENTAL

Porta Cabin has become indispensable and popular as offices and living accommodation in comparison to permanent structures erected for use by contractors or company involved in project undertaking where engineering, supervisory and clerical work are required to be carried out simultaneously at the project site. AIR-MARINE provides Porta Cabins of various dimensions for sale and rental to customers requiring the need. These porta cabin are built on high tensile precoloured steel sheet sandwiched by



water proof Polyurethane (PU) insulation material. Its base and column structures are built of hollow steel sections and come in 20 or 40 feet (length) x 10 feet (width) construction.

AIR-MARINE Customer Orientate Policy is based on 2 fundamental priorities namely:-

- (i) The Superior Quality of its porta cabins which are distinguished in the market by their design, solidity and reliability.
- (ii) The complete total service that focuses on 3 main areas of expertise:-
  - Engineering
  - Service
  - Sales

Built to last, porta cabin uses the concept of modern construction technique. Design is based on total user satisfaction matching realistic requirement.

### 3. DISTRIBUTION CENTRE

Incoming and outgoing goods may require packing storing and distribution facilities. At AIR-MARINE, we provide experience personnel and facilities to assist customers save cost and time.

### 4. PACKING AND REMOVALS

From short distance to long haul, AIR-MARINE is able to plan and arrange for the appropriate packaging methods and mode of transportation to suit customers' requirement for all types of goods or cargoes.

This way your goods or cargoes are assured of safe transit by our professional who are trained and experience. Our household and industrial packing and removal team has solid years of experience in managing packing and removals. Our people can absolutely be trusted for delivering your goods safely to predetermined destinations.

### 5. BUILDING CONSTRUCTION

Building Construction has always been a part of our vision in business diversification programme. Our building design are different from the traditional method of construction and surpass performance criteria. In terms of implementation our innovative design provides building that are user friendly, aesthetically pleasing, energy efficient, ecologically proficient and commercially viable. The new concept of modular building system consisted of "fastfix" insulated sandwich panels and Dec insulated roof decking. This modular design concept ensure that building can be erected at incredible speed. "Fastfix" panels consist of a core of rigid polyurethane form (PU) enclosed by steel plates at both faces. Embedded in each panel is the mechanism known as com-lock which provide an extremely strong and rigid yet easy fixing parts.



We believe AIR-MARINE are capable of offering customers with this innovative building design concept which suit their needs. Our team of construction personnel brings meticulous coordination and supervision at every levels of operations supported by large fleet of logistics and construction equipment. Beside the above, we are also open to opportunities for property development such as low cost housing project in Malaysia. AIR-MARINE has taken on projects for the construction of porta cabins, workers dormitories,



site offices and other miscellaneous amenities such as Training Centre, Polis Pondok, Guard House and etc both for the Oil and Gas and the Hydro Power Industries.

#### 6. CRUSHING, BATCHING PLANTS, COOLING SYSTEM AND ANCILLARY FACILITY

Our latest addition to the business is our successful bid for the Bakun HydroElectric Project under CW2 Main Civil Work Package 11 which consisted of the design, supply, install, test and commissioning of Batching, Crushing Plants, Cooling system and ancillary facility. The crushing plant to be installed consisted of a 500tph static plant and a unit of 220tph crawler mobile crusher with a total anticipated production capacity of 220,000 tonnes of crushed aggregate per month. The batching plant consisted of two(2) units 120M<sup>3</sup>/hour each wet mix concrete production installed with total output of 60,000 M<sup>3</sup> per month. The cooling system consisted of two(2) units chilled water plant and two(2) units flake ice plant with capacity of 360M<sup>3</sup> daily each and 200 tonnes flake ice per day respectively.

The scope of work shall consist the supply of quarried rock to the stockyard and rock shall be processed to suitable aggregate. Other new material such as cement, admixture and fibre shall be mixed to produce ready mixed concrete through the batching plant. Chilled water and flaxe ice are mixed to produce cold concrete which is transported to the pouring site by concrete mixer trucks.

## in pursuit of quality and excellence

At AIR-MARINE we believe in creating the ultimate customer experience. In order to achieve this, we enhance efficiency in every aspect of our operations. We also create an organization setting to foster high performance to occur by nurturing and make heroes of experience. Quality and excellence in services are our obsession throughout the organization. The same intensity is directed to customer per-se.

We embrace mastery in our process and regarded it as a journey. We stayed on this path day after day, year after year and accept the excitement and exhilaration for our continued success. To us, Quality and Excellence involved a message of perfection. Our philosophy of improvement is infinite and continues every day, decade after decade. It becomes our system of life and spirit in every endeavor we undertake. It is in our mindset with all our people living it.

And this is our pledge. We are to meet the challenges of the logistics industry with uttermost intensity. We are to give our full commitment to serves our clients to the very best both in service and in equipment. Unsurpassed, driven by this power, we set our sight high enough to dare to scale the peaks and roam the edge of possibilities.





## List of Equipment Owned

### Crawler Cranes

Rated Lifting Capacity (Tonne)	Brand	Model	Qty (Unit)
1600	TEREX DEMAG	CC 8800-1	1
800	TEREX DEMAG	CC 3800-1 Boom Booster	1
650	DEMAG	SL 3800	1
600	DEMAG	CC 2600SSL	1
400	DEMAG	CC 2000	1
300	KOBELCO	7300	1
280	HITACHI SUMITOMO	SCX 2800-2	1
250	KOBELCO	7250S, CKE 2500-2, 7250-2F	3
200	SUMITOMO	LS578HD	1
180	KOBELCO	CKE 1800-1F	2
150	ZOOMLION	ZCC1500V	1
	KOBELCO	7150	4
	SUMITOMO	SCX 1500, SCX 1500-2	2
	HITACHI	KH 700, KH 850-3	2
100	SUMITOMO	LS 238RH-II	1
	HITACHI	KH 500-III	2
50	HITACHI	KH 180 III	2
	SUMITOMO	LS 118RH5	1
45	KOBELCO	7045	1
35	KOBELCO	7035	1

### Telescopic Crawler Crane

Rated Lifting Capacity (Tonne)	Brand	Model	Qty (Unit)
100	SANY	STB1000T5-8	1



### All Terrain Cranes

Rated Lifting Capacity (Tonne)	Brand	Model	Qty (Unit)
650	DEMAG	AC 650	1
500	LIEBHERR	LTM 1500	1
400	LIEBHERR	LTM 1400	1
270	DEMAG	AC 665SL	1
250	DEMAG	AC 250-1	3
200	TEREX DEMAG	AC 200-1-P, AC 200-1, AC 200	3
160	LIEBHERR	LTM 1160-2	1
	DEMAG	AC 160	1
150	DEMAG	AC 395J, AC 395	5
	DEMAG	AC 120	2
120	SANY	STC1200T6	2
	XCMG	XCT120_Y	1
110	DEMAG	AC 265J	4
100	DEMAG	AC 100	1
	XCMG	XCT100_Y	1
80	LIEBHERR	LTM 1080	1
	DEMAG	AC 205, AC 80-1, AC 80	3
50	DEMAG	AC 155, AC 50-1, AC 50	19

### Rough Terrain Cranes

Rated Lifting Capacity (Tonne)	Brand	Model	Qty (Unit)
80	TADANO	GR-800EX	1
	LIEBHERR	LTL 1080	1
45	KATO	KR 45HV (SS500), KR 45H-III	8
	TADANO	TR 500M-I (PRO 500)	5
	KOBELCO	RK 450-1, RK 450	8
35	TADANO	TR 350M-1, TR 350M	3
	KATO	KR 25H-V, KR 25H-III-L,	6
25	TADANO	TR 250M-5, TR 250M-4	8
	KOBELCO	RK 250-2	1
20	KATO	KR 20H-III	1
	TADANO	TR 200	1



## Manlift

Equipment Details	Brand	Model	Qty
Skylift	Z-TON	ZTON460	1
	HORYONG	SKY450SF	1
	BRONTO	S43MDT	1
	AICHI	SK27A	3
	TADANO	AT270TG	1
	TADANO	AT250TG	1
	TADANO	AT230TG	1
Scissorlift	JLG	2646E2, 3246E2	8
	GENIE	GS3246	3
	SKYJACK	SJII6832	1
Articulating Boomlift	XCMG	XGS40E	1
		XGS34K	3
	JLG	600A	7
	SIMON	AT45	1

## Telescopic Handler / Forklift

Equipment Details	Brand	Model	Qty
4WD Rough Terrain Telescopic Handler	MANITOU	MHT-X 780, MT1337, MT1337SL, MXT1740P	4
	JCB	537-130	1
4WD Rough Terrain Forklift	MANITOU	MC70T	1
Forklift (Diesel Powered)	HELI	CPCD160-YCI-06	1
	UNICARRIERS	D1F5F5OU	10
	TCM	FD100Z8, FD70Z8, FD50T9, FD30Z5T	8
	TOYOTA	4FD100, 3FD80, 5FDM70, 5FD70, 5FD60, 8FD45N, 02-7FD45, 62-8FD30, 6FD30, 162-6FD30, 62-5FD30, 02-7FG30, 6FD25, 62-8FD30, 5FD60	31
	MITSUBISHI	FD70	2
	LINDE	H70D, H30D-02, H30D-03	3
	NISSAN	DF05A70U	1
	HYSTER	H4.00DX	18
H3.00DX		5	
Forklift (Electric Powered)	TOYOTA	8FBN30, 8FBN25, 7FB25, 8FBN20, 7FB20	15
Forklift (Gas Powered)	TOYOTA	02-5FG30	1



## General Transportation Equipment

Equipment Details		Brand	Model	Qty
Primemover	6X4	VOLVO	FH610, FMX460, FMX440, FMX400, FM400, FM12	115
	6X4	SCANIA	P380, P124, P114	9
	6X2	SCANIA	P124, P114, P113	14
	6X4	MAN	30.414 DFRT	4
	6X2	MAN	LE280B	2
		SHACMAN	SX4255XV, SX4257JV324R	18
Crane Lorry Mounted With Self-Loading Crane		SINOTRUK	ZZ3257N3647B	8
		CAMC	HN1310, FS380 HR645, FS350 HR645	4
		HINO	GH3HRKA	2
		MERCEDES BENZ	1824/39	1
		NISSAN	CW66VE	1
Dumper Truck	6X4	NISSAN	CD520, CW66HD, CWA-54H, CWA-52H	10

Equipment Details	Brand / Model	Qty
Semi Trailer - Open Platform	Assorted	23
Semi Trailer - Bucket Platform	Assorted	33
Semi Trailer - Low Loader	Assorted	19
Semi Trailer - Curtain Sider Trailer	Assorted	4
Semi Trailer - Telescopic Open Platform	Assorted	3
Semi Trailer - 20' Container	Assorted	10
Semi Trailer - 20' Container f/w Tipping Hoist	Assorted	74
Semi Trailer - 40' Container (2 axle lines)	Assorted	22
Semi Trailer - 40' Container (3 axle lines)	Assorted	29
Semi Trailer - Container With Side Lifter	Assorted	2
Semi Trailer - Bulk Cement Tanker	Assorted	45
Semi Trailer - Bulk Flyash Tanker	Assorted	33
Semi Trailer - Vehicle Carrier	Assorted	5
Semi Trailer - Lowloader Gooseneck	Assorted	2



### Construction Equipment

Equipment Details	Brand	Model	Qty
Bulldozer	CATERPILLAR	D6D	3
Roller	INGERSOL RAND	SD100-D	1
	DYNAPAC	CA251STD	1
	BOMAG	BW 120AD	1
Excavator	XCMG	XE230M	1
	CATERPILLAR	416, 318BL, 330	3
	KOBELCO	SK50P-6, SK130-8, SK125SRL	4
	KOMATSU	PC210-10MO, PC310	3
Wheel Loader	XCMG	XC968, LW200K, LW200KV	5
	CATERPILLAR	906K, 966D, 926E	7
	LIUGONG	CLG816C	1
Backhoe	JOHN DEERE	310E	1
Piling Machine	HITACHI	EX200-5E	1

### Reach Stacker

Equipment Details	Brand	Model	Qty
Reach Stacker	SANY	SRSC45H1	1
	KALMAR	DRT450	3
Container Handler	KALMAR LMV	DC13.6XLEC4	1
	CATERPILLAR	V900CH	1

### Miscellaneous Equipment

Equipment Details	Brand	Model	Qty
Road Sweeper	ISUZU		1
Genset	KOHLER	360P5	2
	CUMMINS	NTTA 855	1
	VOLVO PENTA	TD520GE/M8B200LA4	1



## Heavy Engineered Transport Equipment

Equipment Details	Max.Axle Load	Model / Module Type	Qty	No Of Axle Lines Owned
SCHEUERLE SPMT Heavyduty Electronic Steering Self-Propelled Modular Transporter	48-ton	PEKZ 260.12.4X24/ 6 axle lines	12	72 axle lines
		PEKZ 210.12.4X24 / 6 axle lines	12	72 axle lines
GOLDHOFER SPMT Heavyduty Electronic Steering Self-Propelled Modular Transporter	40-ton	PST/SL-E 6 / 6 axle lines	8	48 axle lines
GOLDHOFER SPT Mechanical Steering Self-Propelled Modular Transporter	36-ton	PST/SL-4 / 4 axle lines	1	4 axle lines
		PST/SL-6 / 6 axle lines	5	30 axle lines
GOLDHOFER SPT Heavyduty Hydraulic Controlled Modular Trailer	36-ton	THP/SL-4 / 4 axle lines	4	16 axle lines
		THP/SL-6 / 6 axle lines	9	54 axle lines
SCHEUERLE Powerpack Unit	390 HP	Z390	1	
SCHEUERLE Powerpack Unit	350 HP	Z350 DA	7	
GOLDHOFER Powerpack Unit	430 HP	PFV430/60-6	5	
GOLDHOFER Powerpack Unit	490 HP	PFV490/60-31	3	



## Heavy Transport Ancillary Accessories

Equipment Details	Max.Axle Load	Model / Module Type	Qty
GOLDHOFER Low-Profile-Deck	220-ton	31992-20	1
GOLDHOFER Turn Table	300-ton	31992-30	1 set (2 units)
GOLDHOFER Hydraulic Universal Goose-Neck		31992-40	1
GOLDHOFER 6 Axle-Lines Telescopic Lowbed Semi-Trailer		SKPH6-80/80	1
DOLL 8 Axle-Lines Telescopic Lowbed Semi-Trailer		S8E-S2=6+2 PANTHER	1
FAYMONVILLE TELEMAT 3-axle Telescopic Pole Trailer Loading Length: 13.6m to 29.4m		F-S43-1AAF	1
FAYMONVILLE TELEMAT 3-axle Telescopic Pole Trailer Loading Length: 16.0m to 44.0m		F-S43-1AAF	1
FAYMONVILLE TELEMAT 3-axle Telescopic Pole Trailer Loading Length: 18.6m to 55.4m		F-S43-1AAF	1
FAYMONVILLE TELEMAT 5-axle Telescopic Lowloader Semitrailer Loading Length: 15.0m to 23.0m		F-S45-1AAF	1



## Awards & Recognition

### SHELL Malaysia Safety Awards



2017 – Downstream & Integrated Gas Category Bronze Winner



2018 – Downstream & Integrated Gas Category Silver Winner



2019 – Downstream & Integrated Gas Category Bronze Winner



2021 – Downstream & Integrated Gas Category Bronze Winner



**2023 - Integrated Gas Category**  
Gold Winner

**2023 - Most Improved Merit Award**  
Winner

## Awards





**AIR-MARINE**  
GROUP OF COMPANIES

# OUR SERVICE PORTFOLIOS

SPECIALIZED ENGINEERED TRANSPORT SERVICES

HEAVY ODDSIZED CARGO HANDLER

OVERLAND CONVENTIONAL TRUCKING SERVICES

INTERMODAL CONTAINER HAULAGE

MOBILE & CRAWLER CRANE RENTAL SERVICES

HEAVYLIFTING SOLUTIONS

ABNORMAL LOAD MANAGEMENT & ENGINEERING STUDIES

WEIGHING, JACKING & SKIDDING SERVICES

WAREHOUSE RENTAL & INVENTORY MANAGEMENT

FREIGHT FORWARDING & CUSTOMS BROKERAGE

MARSHALLING CONTAINER YARD



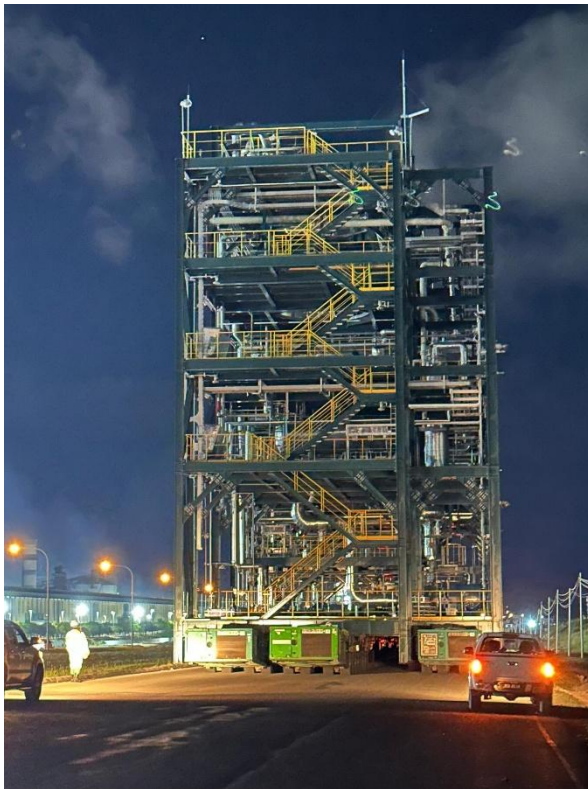
## Photo Gallery



Load-in operation of 840 MT module from MOLF jetty at Bintulu utilizing 30 x 2 axleline and 2 PPU SPMT and transport to OGP site. Upon arrival, the configuration of the SPMT changed to 18 x 4 axleline and 4 PPU to manoeuvre into the highly congested area. The final installation is completed by jacking down onto permanent support ensuring perfect alignment and load transfer to the foundation.



Direct receiving of 290T Boiler (20.5 x 9.96 x 10m) from Crane Vessel onto SCHEUERLE SPMT 12 x 2 (24) axline + 2 PPU. Transporting from Samalaju Port to OCI MP11 Samalaju Plant and final installation by jacking down onto Site Foundation.



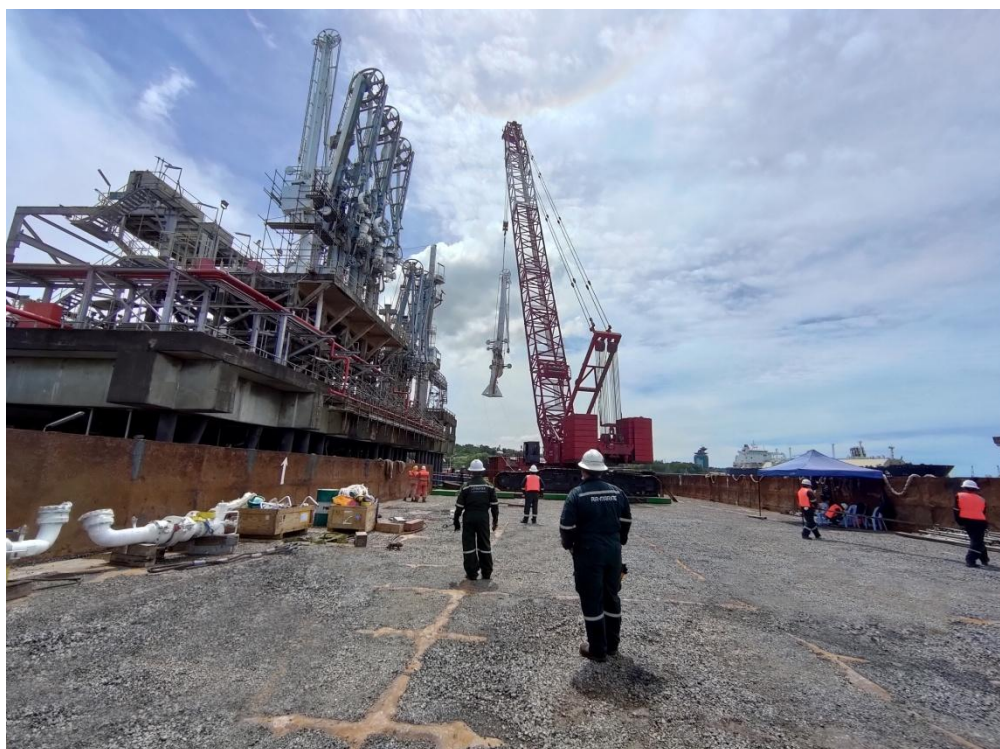
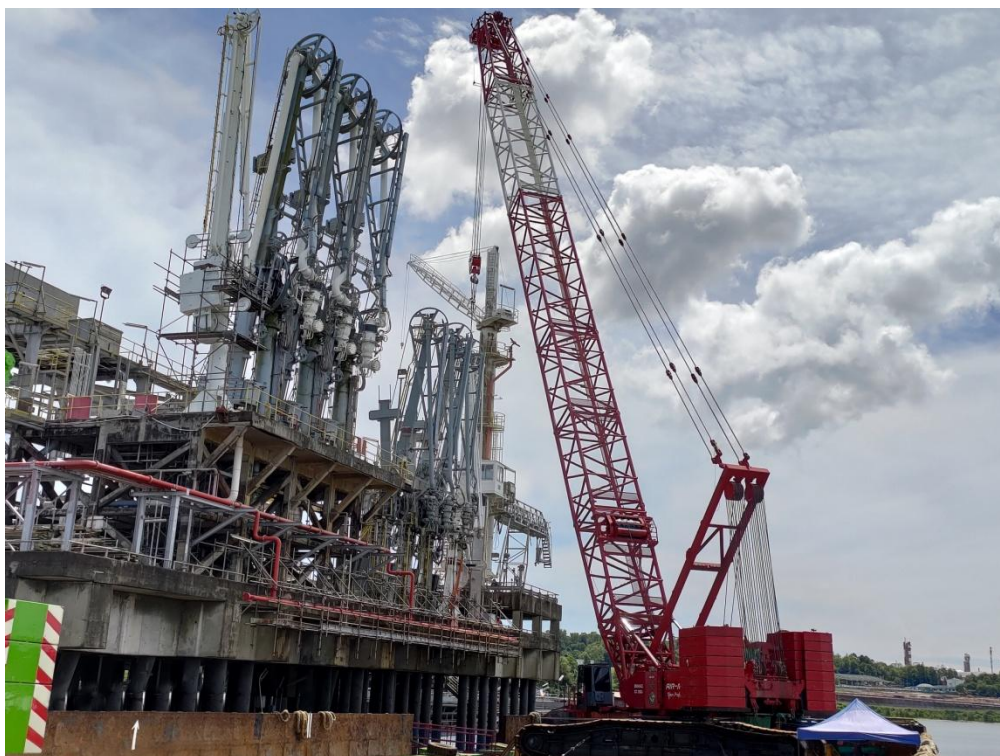
Load-in operation of 826T Module (L38 x W12 x H34m) from Samalaju Port to OCI ME1 Samalaju Plant utilising SCHEUERLE SPMT 36 x 3 (108) axleline and 3 PPU. The final installation is completed by jacking down onto Site Foundation through Gen 4 SCHEUERLE wireless remote system ensuring precision control.



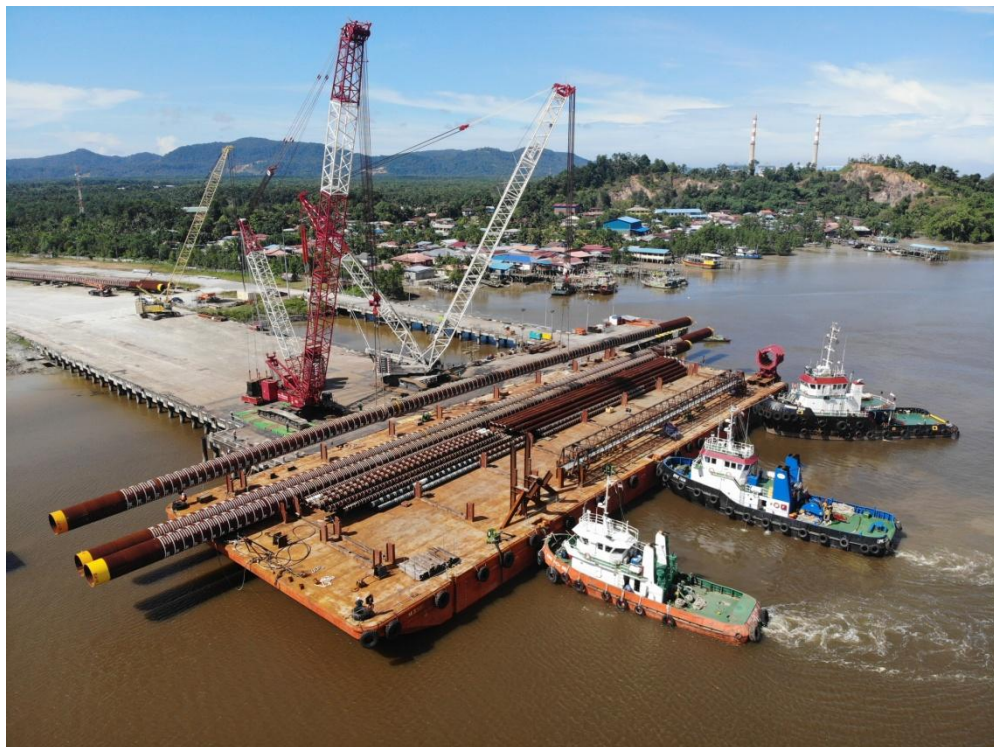
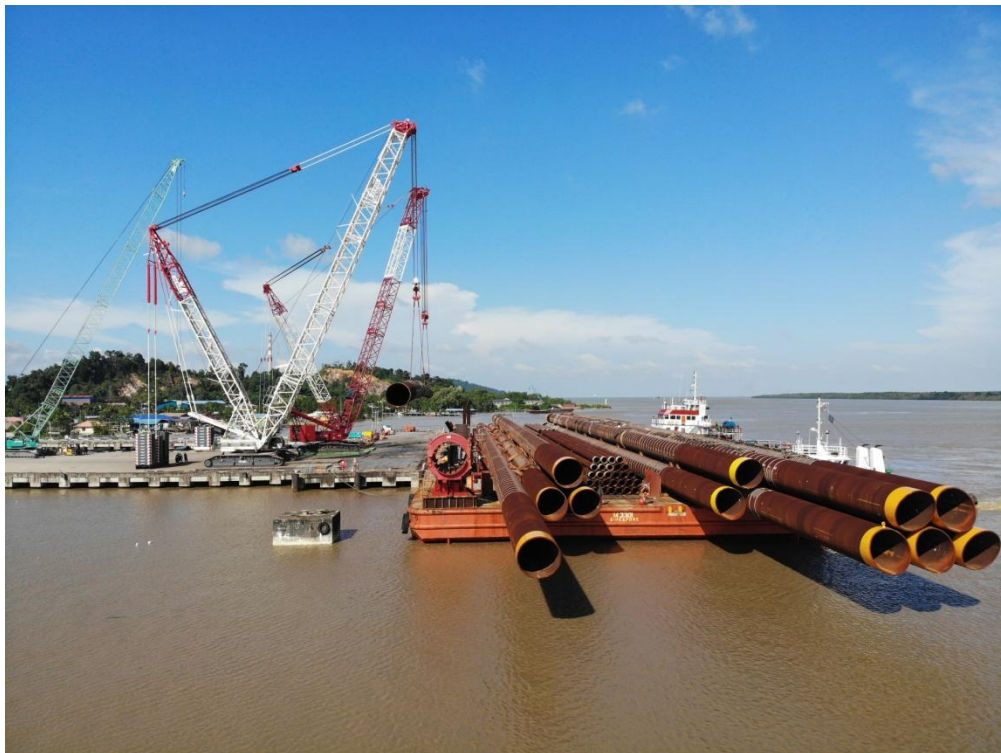
Transportation of 184T Module from Samalaju Port to OCI ME1 Samalaju Plant utilising SCHEUERLE SPMT 30 x 2 (60) axleline and 2 PPU. Using 800T DEMAG CC3800-1 with Boom Booster lifting Module + Accessories with a total load of 282T on top of another Module for the final installation.



Our dedicated team had worked extremely hard to achieve the milestone in the Formosa 2 Offshore Wind Farm project by demonstrating excellence safety performance during the engineered transportation of Pin Piles totaling 69 lengths with individual length measuring 45m to 79m and weighing 257 tonne to 278 tonne on behalf of our esteemed client m/s Lima Bintang / EEW Malaysia at Tanjung Langsat, Johor during the months of May till September 2020. All aspects of the operation including engineering works vis-a-vis technical studies & support, site feasibility studies and etc were performed by AIR-MARINE. The project include onloading, internal shifting, unloading, final positioning and overland transportation covering a travel distance of 10 KM per round trip from EEW Fabshop to Tanjung Langsat Port laydown by utilising 24 axlelines of Scheuerle Gen. 4 self propelled modular transporter (SPMT) coupled with 2 power pack units in Open Compound Configurations model to navigate, maneuvered around narrow and winding sections of the route to the Port laydown.



250 Class Barge mounted with 550t DEMAG CC2600 and 100t HITACHI KH500-3 crawler cranes specifically designed as crane vessel performed the dismantling and reinstatement of Marine Loading Arm Z-3303 at MLNG wharf, Bintulu Port for our esteemed client CYNAPEX/PETRONAS LNG on June 2020.



2 units of DEMAG CC3800-1 a 650 tonne and DEMAG CC 2600, a 550 tonne rated capacity crawler cranes performed the tandem lifting and loadout operation of 12 units weighed 450 metric tonnes, 138 metre Long Piles onboard a 350 class flat top barge for our esteemed client m/s Ocean Might at their own wharf in Kuching, Sarawak on March 2020.



▀ Proudly and successfully executed a complete Loadout of 1,900 tonne PEGAGA WHP Topside offshore structure for our prestigious and distinguished client m/s. Ocean Might/Sapura Energy & Mubadala Petroleum at Ocean Might fabrication yard in Kuching Sarawak on March 2020. On this project, AIR-MARINE were responsible the complete turnkey operation i.e. Weighing, loading, engineered transportation etc. The Loadout onto Flattop ballastable barge was completed by utilizing 72axlelines Scheuerle GEN.4 Self-propelled Modular Transporter (SPMT) coupled with 6 Powerpacks.



Transportation of Absorber Column from Bintulu Port to MRU Project Site using 10 + ½ PST/THP Goldhofer trailer and lifting utilising Demag CC3800-1



Transportation of transformer from Bintulu Port to TKCCPP Site using 24 axeline SCHEUERLE 4<sup>th</sup> Generation SPMT and lifting of Transformer using Demag CC2600



Executing tandem lifting, upending and installation of total 10 units 300 mt HRSG modules for the Tanjung Kidurong Combined Cycle Power Plant Phase 2 project at Bintulu by utilizing 650 mt Demag CC3800-1 and 550 mt Demag CC2600. The job involves non routine critical lifts under complex operations that require additional safety precaution, detail planning and under competent supervision.



Shifting of 395Te D28-A Topside by utilising our 24 axelines of Scheuerle 4th Gen. Self Propelled Modular Trailers (SPMT's) coupled with 2 units hydraulic Powerpack units from the fabrication area to the quayside for our prestigious and distinguished client Oceanmight Sdn Bhd on the 08th of October 2018, at their fabrication yard in Kuching, Sarawak, for Petronas Carigali Sdn Bhd. The synchronised shifting operation lasted for around two hours and subsequently upon reaching the quayside, the topside was delivered under our own brand new 650Te Demag CC 3800-1 Crawler Crane which was used to lift the topside from the SPMT's and safely loaded out by placing the topside onto the deck grillage of the DP2 Vessel. The lifted loadout was done on the 08th of October 2018 noon time and lasted for 2 hours from picking the topside to placing it onto the grillage.



Shifting of 349Te D28-A Jacket by utilising our 24 axelines of Scheuerle 4th Gen. Self Propelled Modular Trailers (SPMT's) coupled with 4 units hydraulic Powerpack units from the fabrication area to the quayside for our prestigious and distinguished client Oceanmight Sdn Bhd on the 24th of August 2018, at their fabrication yard in Kuching, Sarawak, for Petronas Carigali Sdn Bhd. The synchronised shifting operation lasted for around one and half hours and subsequently upon reaching the quayside, the jacket was delivered under our own brand new 650Te Demag CC 3800-1 Crawler Crane which was used to lift the jacket from the SPMT's and safely loaded out by placing the jacket onto the deck grillage of the DP2 Vessel. The lifted loadout was done on the 25th of August 2018 morning and lasted for 2 hours from picking the jacket to placing it onto the grillage.



Shifting of 1756Te KNDW-D Topside by utilising our 72 axelines of Scheuerle 4th Gen. Self Propelled Modular Trailers (SPMT's) coupled with 4units hydraulic Powerpack units from the fabrication area to the quayside for our prestigious and distinguished clients Oceannight Sdn Bhd on the 28th of May 2017, at their fabrication yard in Kuching, Sarawak, for Repsol Oil & Gas Malaysia Ltd. The synchronised shifting operation lasted for around two hours and subsequently upon reaching the quay side, the Topside was loaded out to the already pre-ballasted 330' flat top ballastable barge by utilising 18nos of our diesel driven ballast pumps.



Shifting of 393Te KNDW-D Bridge by utilising our 24 axelines of Scheuerle 4th Gen. Self Propelled Modular Trailers (SPMT's) coupled with 2units hydraulic Powerpack units from the fabrication area to the quayside for our prestigious and distinguished clients Oceannight Sdn Bhd on the 26th of May 2017, at their fabrication yard in Kuching, Sarawak, for Repsol Oil & Gas Malaysia Ltd. The synchronised shifting operation lasted for around one hour and subsequently upon reaching the quay side, the Bridge was loaded out to the already pre-ballasted 330' flat top ballastable barge by utilising 18nos of our diesel driven ballast pumps.



Shifting of 812Te BP-A (Bunga Pakma – A) Topside by utilising our 54 axlelines of Scheuerle 4th Gen. Self Propelled Modular Trailers (SPMT's) coupled with 3units hydraulic Powerpack units from the fabrication area to the quayside for our prestigious and distinguished clients Oceannight Sdn Bhd on the 11th of August 2017, at their fabrication yard in Kuching, Sarawak, for Repsol Oil & Gas Malaysia Ltd. The synchronised shifting operation lasted for around one hour and subsequently upon reaching the quay side, the Topside was loaded out to the already pre-ballasted 330' flat top ballastable barge by utilising 20nos of our diesel driven ballast pumps.



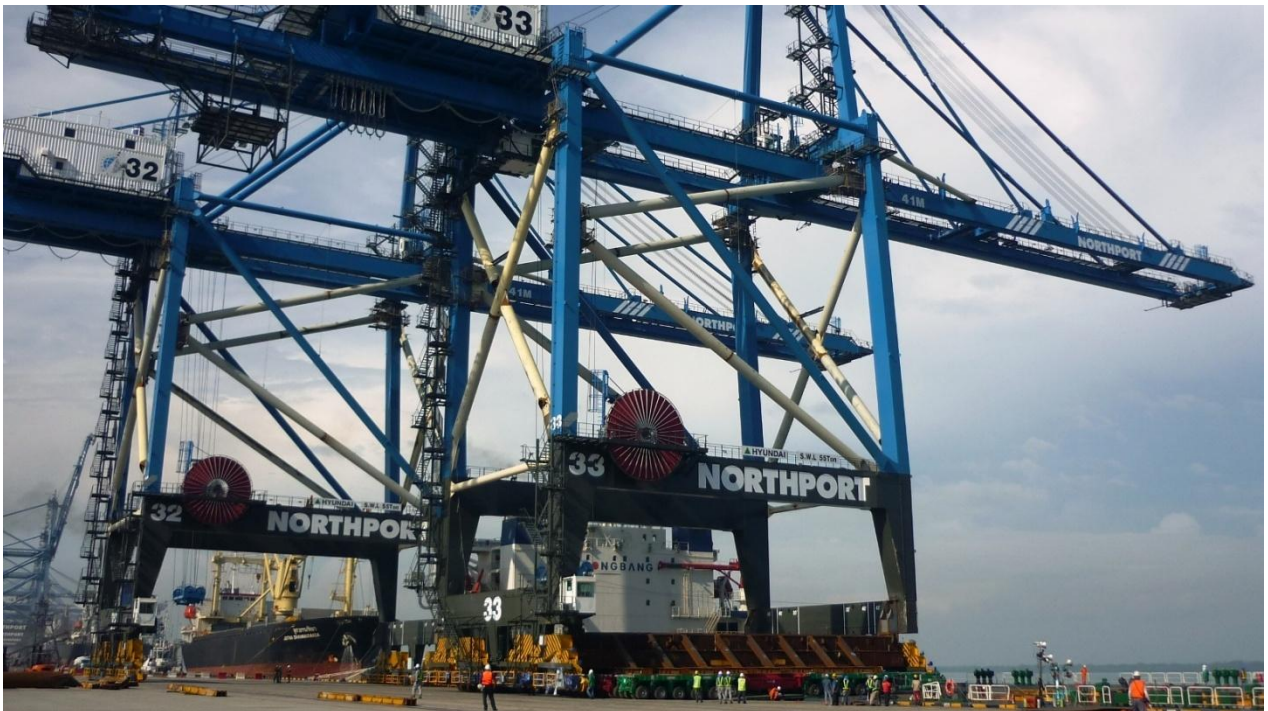
Shifting of 766Te BP-A (Bunga Pakma – A) Jacket by utilising our 36 axlelines of Scheuerle 4th Gen. Self Propelled Modular Trailers (SPMT's) coupled with 4units hydraulic Powerpack units from the fabrication area to the quayside for our prestigious and distinguished clients Oceannight Sdn Bhd on the 16th of August 2017, at their fabrication yard in Kuching, Sarawak, for Repsol Oil & Gas Malaysia Ltd. The synchronised shifting operation lasted for around one hour and subsequently upon reaching the quay side, the Jacket was loaded out to the already pre-ballasted 330' flat top ballastable barge by utilising 20nos of our diesel driven ballast pumps.



✓ The SA-PA Topside weighing 2408MT was fabricated at BDEWC yard in Kuching, Sarawak for Murphy Sarawak Oil Co. Ltd. AIR-MARINE utilised 96 axle lines of Self-Propelled Modular Trailers and 4 power packs to transport and loadout the structure to barge 'Maritime Courage'. 16 units of deck pumps were used for the ballasting / deballasting works during the loadout. AIR-MARINE also provided 4x27m loadout beams, 15 units of RO-RO Ramps and 30 units of wooden wedges required for the loadout operation.



✓ Overland transportation of four (4) units of 275/35KV 180 MVA Power Transformers for our esteemed client, Pestech Sdn Bhd, from Bintulu Port to Samalaju project site, Bintulu. The cargo weighing 150 tonnes each, measuring 3.39m(H) X 2.80m(W) X 10.43m(L) was transported utilizing our hydraulic multi-axle modular trailer towed by high-powered heavy duty primemover.



Load-in operations in May 2013 for 2 units of 55 Ton STS Dong Bang Quay Cranes from barge "Dongbang Giant No. 3" to Northport Wharf No. 17 for our esteemed client, ALE Heavylift (M) Sdn. Bhd. utilizing our Scheuerle 128 axle-lines with 4 powerpacks at Northport, Klang.



Shifting and loadout of SN-AA LQ Topside with combined weight of approximately 1900MT from fabrication site onto barge in April 2013 for our esteemed client, Kencana HL Sdn Bhd. For SN-AA LQ Topside's shifting and loadout, we utilized our Scheuerle's 72 axelines Self-Propelled Modular Transporter (SPMT) with 4 power packs. Combination of Scheuerle and Goldhofer's 120 axelines SPMT with 5 powerpacks is utilized for the shifting and loadout of SN-PA CPP Topside.



Shifting and loadout of SN-PA CPP Topside with combined weight of 3400MT from fabrication site onto barge in April 2013 for our esteemed client, Kencana HL Sdn Bhd at Lumut, Perak utilizing our Scheuerle & Goldhofer 120 axle-lines with 5 powerpacks.



Loadout of Kebangsaan Petroleum Operating Company's KBB jacket weighing 14,400T utilizing 4 units of 735T capacity strand jacks to pull the jacket to transportation barge for our esteemed client, Sapura Kencana Petroleum Berhad.



Shifting and loadout of CPDR-A Topside weighing 1958 MT for Cili Padi Gas Field Development Project at Kencana Yard, Lumut utilizing 72 axles Goldhofer PST-SLE and PST-ESE Electronic Multiway Steering System Modular Transporter on the 19th September 2010. Ten (10) units of ballast pump were used on the offshore barge to maintain stability during the cross-over.



Shifting and Load out of a 2000 MT Accommodation Unit (H-131) onto a 111m Accommodation Barge in Boustead Penang Shipyard (BPS), Pulau Jelajak, Penang on 21 May 2011. A total of 2 x 36 - axle lines single file of Goldhofer THP combined with PST Self Propelled Hydraulic Controlled Modular Transporter.



Shifting and Loadout of F28 DR-A TOPSIDE at Kencana HL Yard, Lumut; a project by Shell Berhad, on 21st-22nd June 2011. A total of 2 x 24 axes SLE and 2 x 12 axes ESE (72 axes Goldhofer trailers) were used to transport the topside weighing almost 2224 tonnes. The topside was shifted at a distance of 400 meters before crossing over to the barge the following day. 14 ballast pumps were used for ballasting.



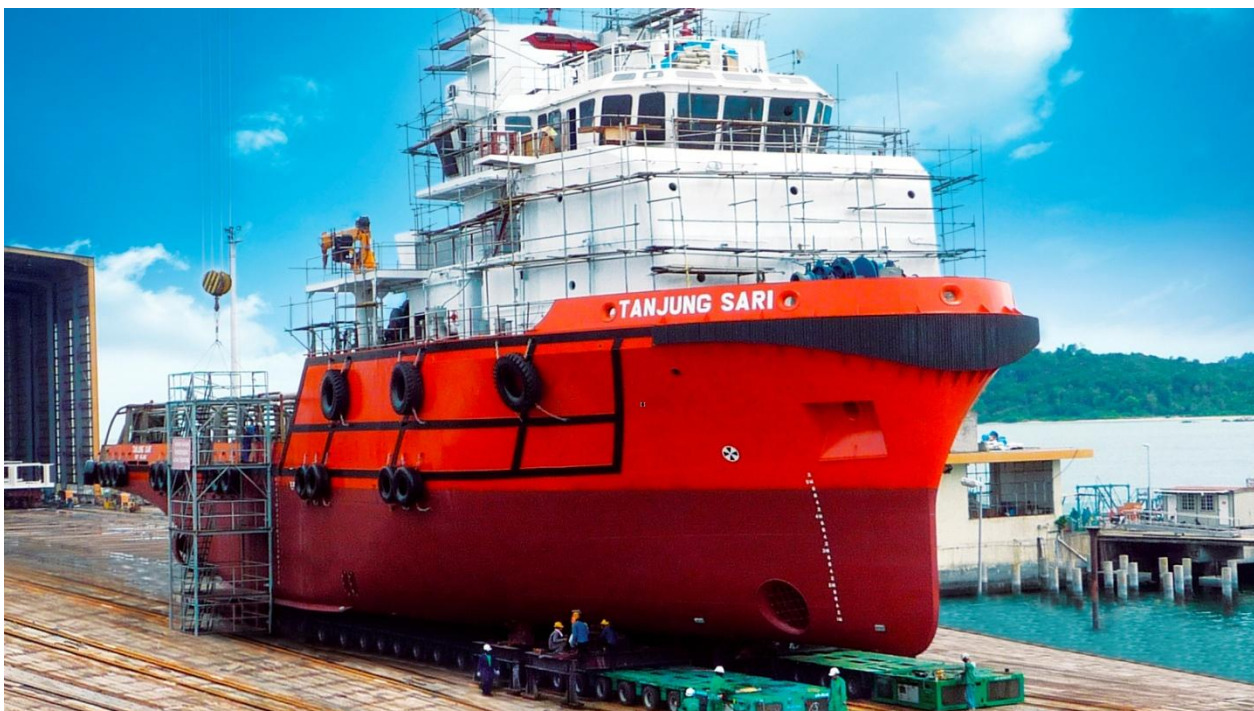
Shifting, Weighing, Loadout and Barge Ballasting for Sabah SHELL's St. Joseph Redevelopment Project's Water Injection Topside Module with combined weight 3000 tonnes for our esteemed client Brooke Dockyard And Engineering Works Corporation utilizing AIR-MARINE's 124 axle lines Goldhofer Self-Propelled Modular Transporter at Brooke Dockyard Fabrication Centre, Kuching, Sarawak, Malaysia on 3rd October 2010.



Shifting, Weighing, Load Out and Barge Ballasting for Newfield Peninsula Malaysia INC's CPP Topside with combined weight of 3500MT utilizing 120 axle-lines Goldhofer Self-Propelled Modular Transporter.



Shifting, Load Out and Barge Ballasting of Dockwise's Buoyancy Tank with combined weight of 4300MT utilizing 168 axle-lines Goldhofer Self-Propelled Modular Transporter at Kencana Petroleum's Yard, Lumut, Perak, Malaysia. After which, a separate operation of Load In, Shifting and Barge Ballasting is being carried out using the same equipments at Malaysian Marine & Heavy Engineering's Yard, Pasir Gudang, Johor, Malaysia



Making a double 90-degree turn maneuver and travelling a distance of 250 metres to the boat-lift-system, the Tanjung Sari Tugboat weighing 1500 tonnes was shifted utilizing 56 axle lines Goldhofer Self-Propelled Modular Hydraulic Controlled Transporter on the 12th July 2009 at Boustead Naval, Lumut Shipyard.



AIR-MARINE was contracted to load-out piles for KHL and KPOC from the fabricator's yard onto a barge. The 146 meter length and 3,582 tons weight of the pile set a record for the second longest and heaviest load-out in the world. We did this remarkable job using our 156 axle-lines of multi-axle trailers and 8 PPU. The combined transport weight was above 4300t. AIR-MARINE did load-out of 2 set of piles for this project.



Provision of one (1) unit 600-Ton Demag CC2600 Crawler Crane at Limay, Bataan, Philippines for lifting one (1) unit Cyclone Assembly weighing 165 MT, with dimension of 7.6m(D) X 12m(H) and lifting height of 55m at Petron Refinery.



Erection of Sarawak SHELL Berhad's Loading Arm weighing 50 MT utilizing Hitachi KH500 as main crane and Kobelco 7450 as tailing crane.



Layang Jacket with a length of 98.1m and 33m wide, weighing a massive 1461Te was shifted from its fabrication location to the quayside around 400m by utilising our 30lines of 4th Gen Scheuerle SPMT's coupled with 4nos powerpack units and 48lines of Goldhofer SLE SPMT's coupled with 3nos Powerpack units on the 04th of September 2015, for our prestigious clients – Sapura Kencana Petroleum Sdn Bhd and JX Nippon Oil & Gas Exploration (Malaysia) Ltd at Sapura's Lumut fabrication yard. At the most congested places, the SPMT's utilised the 90 deg Transverse & Crab Steering to maneuver the jacket successfully to the quayside. The following day early in the morning, the jacket was safely loaded out onto the already pre-ballasted 330' flat top barge by utilising our 16nos diesel driven deck pumps.



Transportation of 8 Nos. Dress out columns from lay down area to foundation area using 6 axle-lines SPMT with Power pack + 6 axle conventional trailers with mini power pack + turn tables. Lifting & Installation of 8 Nos. column onto their foundation using our Demag CC 2600 (550Te) crawler crane as main crane and Kobelco 7150 (150Te) as tailing crane. The weight of the columns range from 89 Te to 150 Te.



Heavy cargo to Bakun Hydroelectric project site, Sarawak, Malaysia.



Heavy cargo to Murum Hydroelectric project site, Sarawak, Malaysia.



On 11th May 2014, AIR-MARINE transported a 300Te - 56m long, 5.4m wide and 6.1m high - Main Cryogenic Heat Exchanger (MCHE) from the port of Bintulu, Sarawak, Malaysia to the Petronas LNG Train 9 (project site). For this transportation, AIR-MARINE utilized its trusted Scheuerle 4th Gen SPMT's; which were assembled in 6 axleline in 4-file (side by side/double) in Dolly configuration, c/w 300Te Bolsters (Turntables) and a 350kW Diesel Driven Powerpacks on each 4-file system. In total there were 24 axlelines SPMT's + 2PPU's + 300Te Bolsters which were utilised for the entire transport operation.



The successful accomplishment of heavy lift transportation for one (1) unit of Deep AGR Absorber Column for Petronas-MLNG with a combined weight of 1480 metric ton hauled from Bintulu Port to Petronas MLNG – Train 9 project site using 48 axle line SCHEUERLE Self Propelled Modular Transporter (SPMT). The sophisticated state-of-the-art equipment, excellent teamwork, cooperation and expert transport engineering have contributed to the success of this move on public road unmatched by any others in Malaysia.

# HEAVY LIFT

& PROJECT FORWARDING INTERNATIONAL

The Friday Flyer - January 2nd 2015

NEED A CHARTER? TELL US THE ROUTE

SELECT ORIGIN

SELECT DESTINATION

Air Charter Service

GET A FAST QUOTE NOW

This week's Friday Flyer is sponsored by Air Charter Service (ACS), which specialises in arranging charters on cargo aircraft, as well as private jets and group charters.

Conditions that continue to beset shipping lines that involve the carriage of heavy and out-of-gauge project cargoes are in severe financial stress. Rates remain depressed, losses are commonplace, competition with other sectors is intense and many of the ships that are capable of handling oversized cargoes are in severe financial stress.

So, what will 2015 bring? Will a recovery in project activities around the globe develop quickly enough to lift freight rates for the benefit of shipping lines? Or will the year see the much predicted swathe of mergers, acquisitions and bankruptcies?

The answer remains elusive, but HLPFI will continue to provide insight and analysis that helps our readers with their daily business decisions.

Let's hope it is a happy new year for one and all, with more examples of the type of shipments that we highlight below. These are HLPFI's top shipments for 2014.



Air Marine transported a 1,480-tonne absorber for the Petronas LNG production development in Malaysia, using 48 axle lines of Scheuerle SPMs. The massive absorber was moved from Malaysia's Bintulu port to the jobsite by road, which involved various discussions and meetings with local authorities prior to the movement, as well as the removal and widening of the port exit gate; removal of various lamp posts and sign boards; cutting of trees; clearing of areas; and strengthening of drains and culverts using steel plates.



Photos below illustrating the overland transport sequences for handling and delivery of one (1) unit 120 MVA transformer with combined weight of 230 metric tons and dimension 7.6mLx 3.6mW x 4.7mH for our esteemed clientelle m/s Pestech Sdn Bhd / Sarawak Energy Berhad for SEB's MAPAI 275/33kV substation project at Kanowit, Sarawak in April 2015

- Execution of lift-off operation for the Transformer by ship's cranes at Port.
- Lowering of Transformer onto awaiting modular trailer hauled by heavy ballasted tractor.
- Transformer securely lashed & fastened onto the trailer before movement.
- Port shunting of transformer from quayside to open storage yard within Port premises.
- Transformer being transferred from open storage yard to Port Coastal Wharf.
- Preparation for setting-up the barge ramp in readiness for Transformer's roll-on operation.
- Execution of roll-on operation for the Transformer onboard the barge.
- Seafastening & hotwork carried out onboard for securing & protecting the Transformer from barge motion against weather.
- Barge sailaway & mooring at destined private wharf in preparation to discharge Transformer using roll-off method at the correct tidal window.
- Roll-off operation completed and Transformer being safely discharged from the barge.
- Transport convey maneuvering through sharp corners enroute to destined site.
- To enable a free passage during transport, overhanging tree branches all being trimmed & disposed of.
- Transportation of the Transformer proceeds smoothly unhindered from dawn till dusk towards the destined site.
- Transport convey successfully arrived at destined site.
- The modular trailer carefully negotiates the final turn inside the site in order to reach the foundation area.
- Modular trailer moves into the foundation area with the Transformer in perfect alignment with the Plinth.





Our dedicated team had worked extremely hard to achieve the milestone in the Formosa 2 Offshore-Wind Farm project by demonstrating excellence safety performance during the engineered transportation of Pin Piles totaling 69 lengths with individual length measuring 45m to 79m and weighing 257 tonne to 278 tonne on behalf of our esteemed client m/s Lima Bintang / EEW-Malaysia at Tanjung Langsat, Johor during the months of May till September 2020.

All aspects of the operation including engineering works vis-a-vis technical studies & support, site feasibility studies and etc were performed by AIR-MARINE. The project include onloading, internal shifing, unloading, final positioning and overland transportation covering a travel distance of 10 KM per round trip from EEW Fabshop to Tanjung Langsat Port laydown by utilising 24 axelines of Scheuerle Gen. 4 self propelled modular transporter (SPMT) coupled with 2 power pack units in Open Compound Configurations model to navigate, maneuvred around narrow and winding sections of the route to the Port laydown.





OUR NEW **DEMAG CC3800-1 CRAWLER CRANE WITH BOOM BOOSTER KIT OF 800 TONS CLASS** BRINGS OUR FLEET TO HIGHER LIFTING CAPACITY AND REACH.

THE **SMALL PHYSICAL FOOTPRINT ALLOWS MORE SPACE** FOR OTHER EQUIPMENT ONSITE COMPARED TO THE USE OF A LARGER CRANE FOR THE SAME LIFT. **SMALLER DIMENSION AND LIGHTER COMPONENTS** OF OUR DEMAG CC3800-1 MEANS **LESS CONGESTION** DURING **TRANSPORTATION ON PUBLIC ROAD** AND **DURING ASSEMBLY AT CUSTOMER'S SITE** THAN A LARGER 750 OR 800 TONS CRANE USED INSTEAD.

THIS **NEW ADDITION** TO OUR FLEET WILL INCREASE OUR **MARKET DOMINANCE IN HEAVYLIFTING** AND PROVIDES COMPETITIVE STRENGTH IN FULFILLING THE NEEDS AND OBLIGATIONS OF OUR VALUED CUSTOMERS.

我们的新型德马格 CC3800-1 800 吨级动臂助推器配备的履带起重机使我们的车队具有更高的起重能力和范围。

与使用其他大型同级别的起重机相比，其实际占地面积更小，为现场其他设备提供了更多空间。

我们的德马格 CC3800-1 尺寸更小、组件更轻，这意味着与使用更大的 750 或 800 吨起重机相比，在公共道路上的运输和在客户现场的组装过程中，减少阻塞。

此新成员将增加我们在重型起重领域市场的主导地位，并提供竞争优势以满足我们尊贵客户的需求和职责。





# AIR-MARINE

## GROUP OF COMPANIES

### **AIR-MARINE** **CARGO AGENCY SDN BHD**

No. 57, Medan Jaya Comm. Centre,  
Jalan Tun Hussein Onn  
PO Box 454, 97008 Bintulu, Sarawak  
Tel: +60 (0) 86 33 88 55  
Fax: +60 (0) 86 333 800  
Email: info@air-marine.com

#### **SARAWAK** **BINTULU**

No. 57, Medan Jaya Commercial Centre  
Jalan Tun Hussein Onn, P.O. Box 454  
97008 Bintulu, Sarawak, East Malaysia  
Tel: +60 (86) 33 88 55  
Fax: +60 (86) 333 800

#### **KUCHING**

Lot 868, Demak Laut Industrial Park  
Jalan Bako, 93050 Kuching  
P.O Box 1090, 93822 Kuching, Sarawak  
Tel: +60 (82) 43 2288  
Fax: +60 (82) 43 2233

#### **MIRI**

Lot 1228-1230, Block 5 KBLD  
Lutong-Kuala Baram Road  
Desa Senadin (Phase 1)  
98100 Lutong, Miri, Sarawak  
Tel: +60 (85) 660 111 / 660 222  
Fax: +60 (85) 660 333

### **AIR-MARINE** **FREIGHT SERVICES SDN BHD**

Lot 3623, Block 26, Kemena Land District  
KINDA Ind. Estate, Jln Tg. Kidurong  
PO Box 2750, 97008 Bintulu, Sarawak  
Tel: +60 (0) 86 255 355  
Fax: +60 (0) 86 310 800  
Email: amfreight@air-marine.com

#### **WEST MALAYSIA**

**SELANGOR DARUL EHSAN**  
No. 3, Jalan PJS 8/13, Dataran Mentari  
Bandar Sunway, 46150 Petaling Jaya  
Selangor Darul Ehsan  
Tel: +60 (3) 5632 9997  
Fax: +60 (3) 5632 7733

#### **JOHOR DARUL TAKZIM**

Lot 3 & 4, Jalan Gangsa,  
Kawasan Perindustrian Pasir Gudang,  
81700 Pasir Gudang, Johor Darul Takzim  
Tel: +60 (7) 252 1212  
Fax: +60 (7) 253 2233

#### **PERAK DARUL RIDZUAN**

PT. 11626, Lumut Port Industrial Park  
Kawasan Perusahaan Kampung Acheh  
Mukim of Lumut, Daerah Manjung  
32000 Sitiawan, Perak Darul Ridzuan  
Tel: +60 (5) 691 8855  
Fax: +60 (5) 693 2288

### **AIR-MARINE** **PROJECT ENGINEERING SDN BHD**

Lot 3 & 4, Jalan Gangsa  
Kawasan Perindustrian Pasir Gudang  
81700 Pasir Gudang, Johor Darul Takzim  
Tel: +60 (07) 2525 111  
Fax: +60 (07) 2522 777  
Email: info@air-marine.com

#### **SUBSIDIARIES**

AIR-MARINE Project Engineering  
International Ltd. (LL05272)  
Lot 1, 1st Floor, Wisma Siamloh  
Jalan Kemajuan, 87007  
Federal Territory of Labuan, Sabah  
Tel: +60 (87) 413 524  
Fax: +60 (87) 414 526

AIR-MARINE Project Engineering  
Pte. Ltd. (200407214-M)  
192, Waterloo Street,  
#05-01 Skyline Building  
Singapore 187966  
Tel / Fax: +65 6333 5565